

DATASHEET

Version: 2016-08-17

SNAI 1/2 Antibody, pAb, Rabbit

Cat. No.: A01641-40

Size: 40 µg

Synonyms: SNAIL Antibody, pAb, Rabbit; SNAI2 Antibody, pAb, Rabbit

Description:

SNAI protein family is a transcriptional repressor which contains SNAI1 and SNAI2. SNAI protein binds to the E-cadherin promoter region to repress transcription during development. The binding of SNAI protein to integrin promoter sequences represses integrin expression and results in reduced cell adhesion. The tumor suppressor protein p53 induces SNAL expression in γ-irradiated cells. Deletion mutations in the corresponding SNAI gene are associated with the pigmentation disorders Waardenburg Syndrome and Piebaldism.

GenScript **SNAI 1/2 Antibody, pAb, Rabbit** is developed in rabbit using a KLH-coupled synthetic peptide from C-terminal of human SNAI1 (Swiss Prot: O95863) and human SNAI2 (Swiss Prot: O43623).

Immunogen: KLH-coupled synthetic peptide from C-terminal of human SNAI1 (Swiss Prot: O95863) and human SNAI2 (Swiss Prot: O43623)

Host: Rabbit

Antigen Synonyms: Human

Conjugation: Unconjugated

Formulation:

0.5 mg/ml, lyophilized with PBS, pH 7.4, containing 0.02% sodium azide.

Ig Subclass: IgG

Specificity: GenScript **SNAI 1/2 Antibody, pAb, Rabbit**

detects endogenous levels of human SNAI 1/2. Predicted to react with mouse and rat SNAI2 according to sequence homology.

Positive Control: MCF-7, HEK293

Purification: Immunoaffinity chromatography

Applications:

Working concentrations for specific applications should be determined by the investigator. The appropriate concentrations may be affected by secondary antibody affinity, antigen concentration, the sensitivity of the method of detection, temperature, the length of the incubations, and other factors. The suitability of this antibody for applications other than those listed below has not been determined. The following concentration ranges are recommended starting points for this product.

Western blot: 0.5-1 µg/ml.

Other Applications: User optimized.

Species Reactivity: Human. Reactivity to other species is not tested yet.

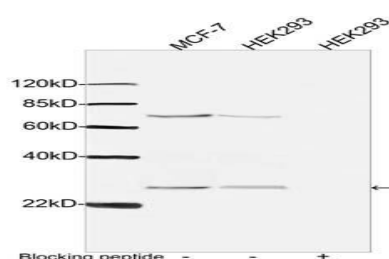
Reconstitution:

Reconstitute the lyophilized powder with deionized water (or equivalent) to an antibody concentration of 0.5 mg/ml.

Storage:

The antibody is stable in lyophilized form if stored at -20°C or below. The reconstituted antibody can be stored for 2-3 weeks at 2-8°C. For long term storage, aliquot and store at -20°C or below. Avoid repeated freezing and thawing cycles.

Example



Western blot analysis of cell lysates using SNAI 1/2 Antibody, pAb, Rabbit (GenScript, A01641, 1 µg/ml)

The signal was developed with IRDye™ 800 Conjugated Goat Anti-Rabbit IgG.

Predicted Size: SNAI 1 29 kD

SNAI 2 29 kD

Observed Size: 29 kD, 75kD

