

## DATASHEET

Version: 2016-08-17

### CD45 Antibody, pAb, Rabbit

**Cat. No.:** A01655-40

**Size:** 40 µg

**Synonyms:** PTPRC Antibody, pAb, Rabbit;

#### Description:

CD45, also known as leukocyte-common antigen (LCA) is an integral membrane protein tyrosine phosphatase expressed on leukocyte cell surface. It suppresses JAK kinases and negatively regulates cytokine receptor signaling. CD45 is essential for activation of T and B cells by mediating cell-to-cell contacts and regulating protein-tyrosine kinases involved in signal transduction. CD45 is also involved in integrin-mediated adhesion and migration of immune cells. It can be used to identify undifferentiated hematopoietic tumors as an antigenic marker.

GenScript **CD45 Antibody, pAb, Rabbit** is developed in rabbit using a KLH-coupled synthetic peptide from C-terminal of human CD45 protein (Swiss Prot: P08575).

**Immunogen:** KLH-coupled synthetic peptide from C-terminal of human CD45 protein (Swiss Prot: P08575)

**Host:** Rabbit

**Antigen Synonyms:** Human

**Conjugation:** Unconjugated

#### Predicted Band Size:

147 KD

#### Observed Band Size:

147 KD

#### Formulation:

0.5 mg/ml, lyophilized with PBS, pH 7.4, containing 0.02%

sodium azide

**Ig Subclass:** IgG

**Specificity:** GenScript**CD45 Antibody, pAb, Rabbit** detects endogenous levels of human CD45 protein.

**Positive Control:** Jurkat

**Purification:** Immunoaffinity chromatography

#### Applications:

Working concentrations for specific applications should be determined by the investigator. The appropriate concentrations may be affected by secondary antibody affinity, antigen concentration, the sensitivity of the method of detection, temperature, the length of the incubations, and other factors. The suitability of this antibody for applications other than those listed below has not been determined. The following concentration ranges are recommended starting points for this product.

**Western blot:** 1-2 µg/ml

**Other Applications:** user optimized

**Species Reactivity:** Human. Reactivity to other species has not been tested yet.

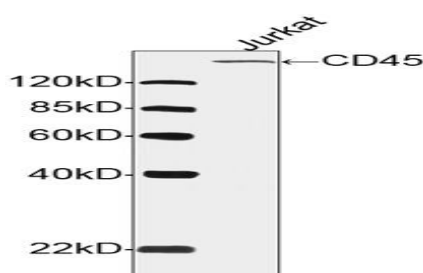
#### Reconstitution:

Reconstitute the lyophilized powder with deionized water (or equivalent) to an antibody concentration of 0.5 mg/ml.

#### Storage:

The antibody is stable in lyophilized form if stored at -20°C or below. The reconstituted antibody can be stored for 2-3 weeks at 2-8°C. For long term storage, aliquot and store at -20°C or below. Avoid repeated freezing and thawing cycles.

#### Example



Western blot analysis of cell lysates using CD45 Antibody, pAb, Rabbit (GenScript, A01655, 1 µg/ml) The signal was developed with IRDye™ 800 Conjugated Goat Anti-Rabbit IgG. Predicted Size: 147 KD Observed Size: 147 KD

