

DATASHEET

Version: 2016-08-17

RPA70 Antibody, pAb, Rabbit**Cat. No.:** A01689-40**Size:** 40 µg**Synonyms:** RPA1 antibody;**Description:**

RPA70 is a component of a heterotrimeric complex, composed of 70, 32/30 and 14 kD subunits, collectively known as RPA. RPA is a single stranded DNA binding protein, whose DNA binding activity is believed to reside entirely in the 70 kD subunit. The complex plays an essential role in several cellular processes in DNA metabolism including replication, recombination and DNA repair. RPA binds and subsequently stabilizes single-stranded DNA intermediates and thus prevents complementary DNA from reannealing.

GenScript RPA70 Antibody, pAb, Rabbit is developed in rabbit using a KLH-coupled synthetic peptide within residues 200~250 of human RPA70 protein (Swiss Prot: P27694).

Immunogen: KLH-coupled synthetic peptide within residues 200~250 of human RPA70 protein (Swiss Prot: P27694)

Host: Rabbit**Antigen Synonyms:** Human**Conjugation:** Unconjugated**Formulation:**

0.5 mg/ml, lyophilized with PBS, pH 7.4, containing 0.02% sodium azide

Ig Subclass: IgG**Specificity:** GenScript RPA70 Antibody, pAb, Rabbit

detects human RPA70 protein. Predicted to react with mouse and rat RPA70 protein according to sequence homology.

Purification: Immunoaffinity chromatography**Applications:**

Working concentrations for specific applications should be determined by the investigator. The appropriate concentrations may be affected by secondary antibody affinity, antigen concentration, the sensitivity of the method of detection, temperature, the length of the incubations, and other factors. The suitability of this antibody for applications other than those listed below has not been determined. The following concentration ranges are recommended starting points for this product.

Western Blot: 0.5-1 µg/ml**Other Applications:** user optimized

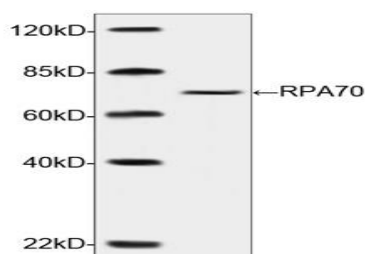
Species Reactivity: Human. Reactivity to other species has not been tested yet.

Reconstitution:

Reconstitute the lyophilized powder with deionized water (or equivalent) to an antibody concentration of 0.5 mg/ml.

Storage:

The antibody is stable in lyophilized form if stored at -20°C or below. The reconstituted antibody can be stored for 2-3 weeks at 2-8°C. For long term storage, aliquot and store at -20°C or below. Avoid repeated freezing and thawing cycles.

Example

Western blot analysis of extracts from HEK293 cells transfected with human RPA70 for 72hr using RPA70 Antibody, pAb, Rabbit (GenScript, A01689, 1 µg/ml)

The signal was developed with IRDye™ 800 Conjugated Goat Anti-Rabbit IgG.

Predicted Size: 70 kD

Observed Size: 70 kD