

**DATASHEET**

Version: 2016-08-17

**PU.1 Antibody, pAb, Rabbit****Cat. No.:** A01692-40**Size:** 40 µg**Synonyms:** PU.1 Antibody, pAb, Rabbit; Spi1 antibody**Description:**

PU.1 known as Spi1 and Sfpi1, is an ETS-domain transcription factor essential for the development of myeloid and B-lymphoid cells. In myeloid cells, PU.1 may regulate transcription of both FMS and CD18/11B proteins that are central to the osteoclast phenotype. The failure to express PU.1 might preclude development of osteoclasts, leading to arrested bone resorption and osteopetrosis. PU.1 expression increases with the induction of osteoclastogenesis by either 1,25-dihydroxyvitamin D3 or dexamethasone which confirms the association between PU.1 and osteoclast differentiation.

**GenScript PU.1 Antibody, pAb, Rabbit** is developed in rabbit using a KLH-coupled synthetic peptide from C-terminal of human PU.1 protein (Swiss Prot: P17947).

**Immunogen:** KLH-coupled synthetic peptide from C-terminal of human PU.1 (Swiss Prot: P17947)

**Host:** Rabbit**Antigen Synonyms:** Human**Conjugation:** Unconjugated**Formulation:**

0.5 mg/ml, lyophilized with PBS, pH 7.4, containing 0.02% sodium azide

**Ig Subclass:** IgG

**Specificity:** GenScript PU.1 Antibody, pAb, Rabbit detects human PU.1 protein.

**Purification:** Immunoaffinity chromatography

**Applications:**

Working concentrations for specific applications should be determined by the investigator. The appropriate concentrations may be affected by secondary antibody affinity, antigen concentration, the sensitivity of the method of detection, temperature, the length of the incubations, and other factors. The suitability of this antibody for applications other than those listed below has not been determined. The following concentration ranges are recommended starting points for this product.

**Western Blot:** 1-2 µg/ml **Other Applications:** user optimized

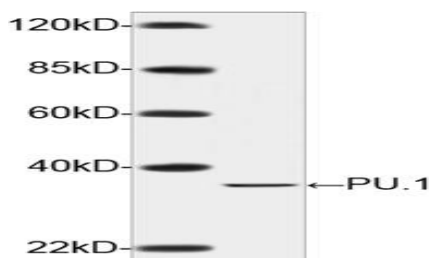
**Species Reactivity:** Human. Reactivity to other species has not been tested yet.

**Reconstitution:**

Reconstitute the lyophilized powder with deionized water (or equivalent) to an antibody concentration of 0.5 mg/ml.

**Storage:**

The antibody is stable in lyophilized form if stored at -20°C or below. The reconstituted antibody can be stored for 2-3 weeks at 2-8°C. For long term storage, aliquot and store at -20°C or below. Avoid repeated freezing and thawing cycles.

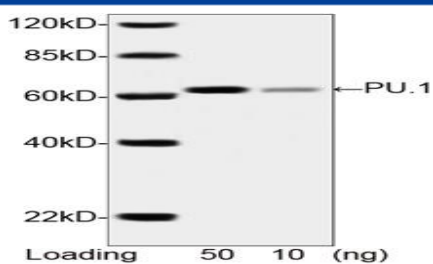
**Example**

Western blot analysis of extracts from HEK293 cells transfected with human PU.1 for 72hr using PU.1 Antibody, pAb, Rabbit (GenScript, A01692, 2 µg/ml)

The signal was developed with IRDye™ 800 Conjugated Goat Anti-Rabbit IgG.

Predicted Size: 31 kD

Observed Size: 31 kD



Western blot analysis of human recombinant PU.1 fusion protein using PU.1 Antibody, pAb, Rabbit (GenScript, A01692, 2 µg/ml). The signal was developed with IRDye™ 800 Conjugated Goat Anti-Rabbit IgG.

Predicted Size: 62 kD

Observed Size: 62 kD