

DATASHEET

Version: 2016-08-17

SUMO-tag Antibody(4G11E9), mAb, Mouse

Cat. No.: A01693-40

Size: 40 µg

Synonyms: SUMO Antibody;

Description:

SUMO tags are emerging as a viable alternative for increasing both the expression and solubility of otherwise hard-to-express proteins. The SUMO tag can be cleanly excised using SUMO protease, which recognizes the conformation of SUMO protein rather than a specific sequence within SUMO. The SUMO system can be used effectively in both prokaryotic and eukaryotic systems. **GenScript SUMO-tag Antibody (4G11E9), mAb, Mouse** is suitable for detecting fusion proteins that contain a SUMO-tag.

GenScript SUMO-tag Antibody (4G11E9), mAb, Mouse is produced from the hybridoma resulting from fusion of Sp2/0 myeloma and lymphocytes obtained from mouse immunized with recombinant yeast SUMO protein.

Immunogen: Purified recombinant yeast SUMO protein

Host: Mouse

Conjugation: Unconjugated

Formulation:

0.5 mg/ml, lyophilized with PBS, pH 7.4, containing 0.02% sodium azide

Clone: 4G11E9

Ig Subclass: IgG2a k

Specificity: GenScript SUMO-tag Antibody (4G11E9), mAb, Mouse specifically reacts with fusion proteins containing SUMO epitope tags.

Positive Control: Yeast cell lysates

Purification: Protein A affinity column

Applications:

Working concentrations for specific applications should be determined by the investigator. The appropriate concentrations may be affected by secondary antibody affinity, antigen concentration, the sensitivity of the method of detection, temperature, the length of the incubations, and other factors. The suitability of this antibody for applications other than those listed below has not been determined. The following concentration ranges are recommended starting points for this product.

ELISA: 0.05-0.2 µg/ml

Western blot: 0.5-1 µg/ml

Other Applications: user optimized

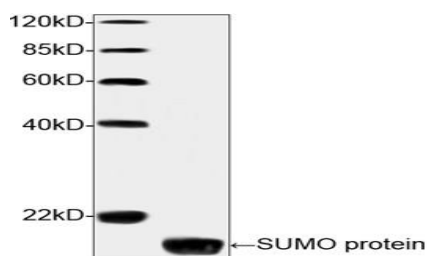
Reconstitution:

Reconstitute the lyophilized powder with deionized water (or equivalent) to an antibody concentration of 0.5 mg/ml.

Storage:

The antibody is stable in lyophilized form if stored at -20°C or below. The reconstituted antibody can be stored for 2-3 weeks at 2-8°C. For long term storage, aliquot and store at -20°C or below. Avoid repeated freezing and thawing cycles.

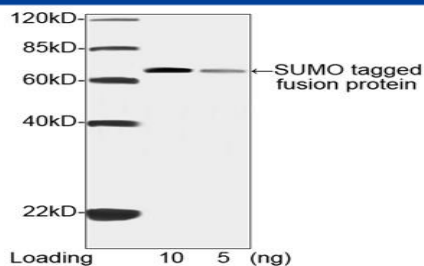
Example



Western blot analysis of Yeast cell lysates using SUMO-tag Antibody (4G11E9), mAb, Mouse (GenScript, A01693, 1 µg/ml). The signal was developed with IRDye™ 800 Conjugated Goat Anti-Mouse IgG.

Predicted Size: 12 kD

Observed Size: 12 kD



Western blot analysis of SUMO-tagged fusion protein using SUMO-tag Antibody (4G11E9), mAb, Mouse (GenScript, A01693, 1 µg/ml)

The signal was developed with IRDye™ 800 Conjugated Goat Anti-Mouse IgG.

Predicted Size: 62 kD

Observed Size: 62 kD