

## CD20 Antibody, mAb, Mouse

Cat. No.	Name	Clone
V03601	CD20 Antibody (M5C49), mAb, Mouse	M5C49
Specificity:	Human CD20	
Isotype:	IgG1	
Production:	Cultured <i>in vitro</i> under conditions free from animal-derived components	
Purification:	Protein A/G affinity column	
Formulation:	PBS, pH 7.4, containing 0.03% Proclin 300.	
Storage:	For long term storage, aliquot and store at -20°C or below. Avoid repeated freezing and thawing cycles.	
Application:	Flow Cytometry	
Antigen description:	CD20, known as B1 and Bp35, is a non-glycosylated transmembrane protein. It is expressed exclusively on the surface of B cells, such as pre-B-cells, resting and activated B cells and many malignant B cells. On plasma cells, there is no expression. By participating B-cell activation, CD20 can activate optimal B-cell immune response against T-independent antigens.	
Note:	GenScript can customize this product per customer's request including product size, buffer components, etc.	

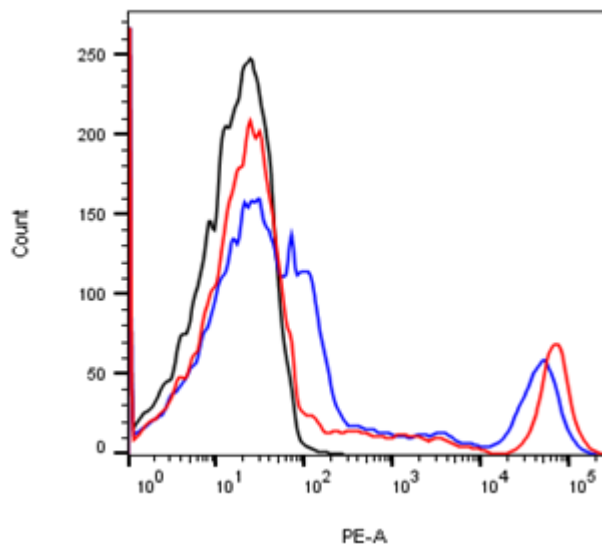
For Research or further manufacturing use only

**860 Centennial Ave., Piscataway, NJ 08854, USA**

Toll-Free: 1-877-436-7274 Tel: 1-732-885-9188 (US), +86-25-58897288-2602 (CN) Fax: 1-732-210-0262 Email: [ivd@genscript.com](mailto:ivd@genscript.com) Web: [www.genscript.com](http://www.genscript.com)

Example:

Flow cytometric analysis of CD20 expression on human peripheral blood lymphocytes



Flow cytometric analysis of human whole blood after red blood cell lysis using CD20 Antibody (M5C49), mAb, Mouse (GenScript, V03601; red curve) or with a negative control (black curve), or with a positive antibody (blue curve) followed by R-PE conjugated anti-mouse IgG.

For Research or further manufacturing use only

**860 Centennial Ave., Piscataway, NJ 08854, USA**

Toll-Free: 1-877-436-7274 Tel: 1-732-885-9188 (US), +86-25-58897288-2602 (CN) Fax: 1-732-210-0262 Email: [ivd@genscript.com](mailto:ivd@genscript.com) Web: [www.genscript.com](http://www.genscript.com)