

Mouse Activin RIIA/ACVR2A Protein

Cat. No. ARA-MM12A

Description

| | |
|------------------|---|
| Source | Recombinant Mouse Activin RIIA/ACVR2A Protein is expressed from HEK293 with His tag at the C-terminus It contains Ala20-Pro135. |
| Accession | P27038 |
| Molecular Weight | The protein has a predicted MW of 15.06 kDa. Due to glycosylation, the protein migrates to 35-45 kDa based on Bis-Tris PAGE result. |
| Endotoxin | Less than 1 EU per µg by the LAL method. |
| Purity | > 95% as determined by Bis-Tris PAGE; > 95% as determined by HPLC |

Formulation and Storage

| | |
|----------------|---|
| Formulation | Lyophilized from 0.22 µm filtered solution in PBS (pH 7.4). Normally 8% trehalose is added as protectant before lyophilization. |
| Reconstitution | Centrifuge the tube before opening. Reconstituting to a concentration more than 100 µg/ml is recommended. Dissolve the lyophilized protein in distilled water. |
| Storage | -20 to -80°C for 12 months as supplied from date of receipt. -80°C for 3 months after reconstitution. Recommend to aliquot the protein into smaller quantities for optimal storage. Please minimize freeze-thaw cycles. |

Background

Activin A receptor type 2A (ACVR2A) is a membrane receptor in the transforming growth factor- beta (TGF-β) signaling pathway, which is involved in the regulation of cell proliferation, migration, and apoptosis. Loss of ACVR2A has an important role in cancer progression and distant metastasis and may serve as a prognostic marker in patients with colon cancer.

Assay Data

Bis-Tris PAGE



Mouse Activin RIIA on Bis-Tris PAGE under reduced condition. The purity is greater than 95%.

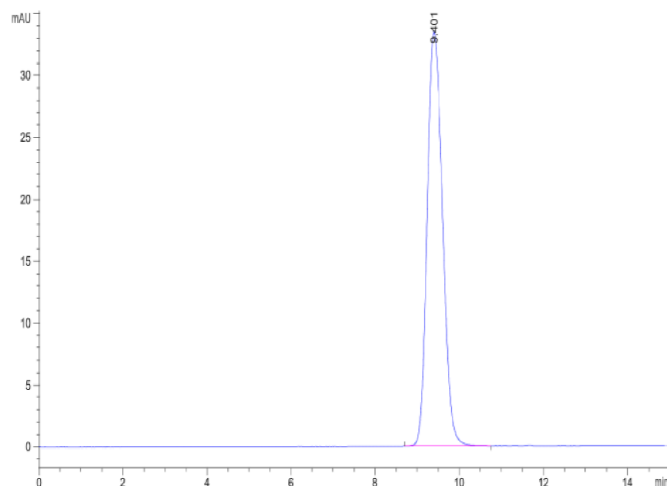
SEC-HPLC

Mouse Activin RIIA/ACVR2A Protein

Cat. No. ARA-MM12A

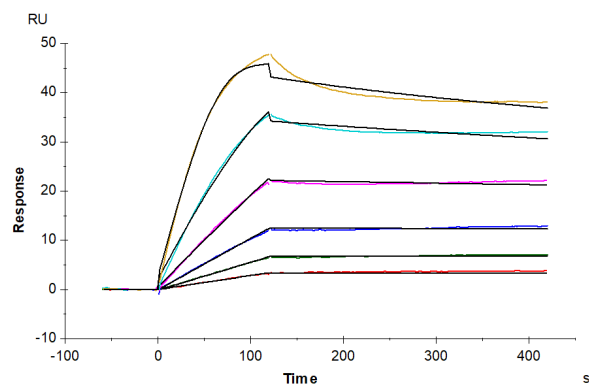


Assay Data



The purity of Mouse Activin RIIA is greater than 95% as determined by SEC-HPLC.

SPR Data



Mouse Activin RIIA , His Tag captured on CM5 Chip via Anti-His Antibody can bind Human Activin A, No Tag with an affinity constant of 46.06 pM as determined in SPR assay (Biacore T200).