

Biotinylated Human B7-H3/CD276 Protein



Cat. No. BH7-HM573B

Description	
Source	Recombinant Biotinylated Human B7-H3/CD276 Protein is expressed from HEK293 with hFc tag and Avi tag at the C-terminus. It contains Leu29-Pro245.
Accession	Q5ZPR3-2
Molecular Weight	The protein has a predicted MW of 51.06 kDa. Due to glycosylation, the protein migrates to 65-75 kDa based on Bis-Tris PAGE result.
Endotoxin	Less than 1 EU per µg by the LAL method.
Purity	> 95% as determined by Bis-Tris PAGE > 95% as determined by HPLC

Formulation and Storage	
Formulation	Lyophilized from 0.22 µm filtered solution in PBS (pH 7.4). Normally 8% trehalose is added as protectant before lyophilization.
Reconstitution	Dissolve the lyophilized protein in distilled water. Please refer to the Certificate of Analysis for detailed instructions.
Storage	-20 to -80°C for 12 months as supplied from date of receipt. -80°C for 3 months after reconstitution. Recommend to aliquot the protein into smaller quantities for optimal storage. Please minimize freeze-thaw cycles.

**Background**

B7-H3, a member of the B7 family of immunomodulatory molecules, is overexpressed in a wide range of solid cancers. B7-H3 binds to activated T cells via an as yet unidentified receptor. In assays using sub-optimal amount so anti-CD3 stimulation, 2IgB7H3 enhances T cell proliferation, T cell interferon-gamma (IFN-gamma) production, and cytotoxic T cells induction.

Assay Data

Bis-Tris PAGE



Biotinylated Human B7-H3 on Bis-Tris PAGE under reduced condition. The purity is greater than 95%.

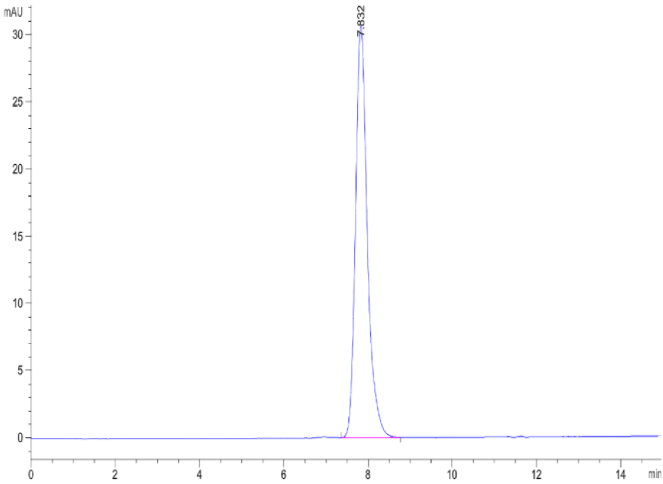
SEC-HPLC

Biotinylated Human B7-H3/CD276 Protein

Cat. No. BH7-HM573B



Assay Data

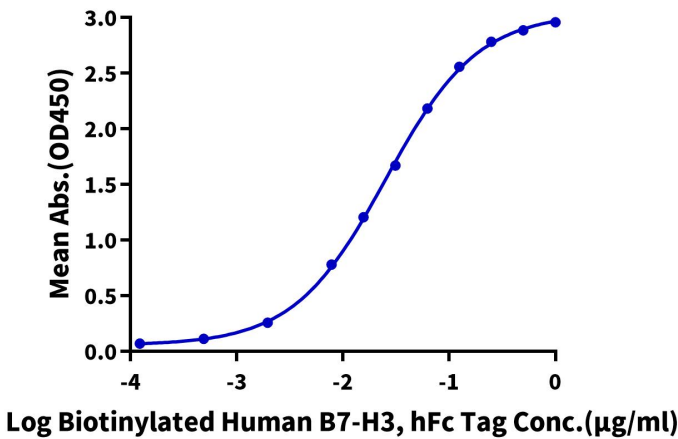


The purity of Biotinylated Human B7-H3 is greater than 95% as determined by SEC-HPLC.

ELISA Data

Biotinylated Human B7-H3, hFc Tag ELISA

0.1µg Anti-B7-H3 Antibody, hFc Tag Per Well



Immobilized Anti-B7-H3 Antibody, hFc Tag at 1µg/ml (100µl/well) on the plate. Dose response curve for Biotinylated Human B7-H3, hFc Tag with the EC50 of 25.3ng/ml determined by ELISA (QC Test).