

Human BTN2A1&BTN3A1 complex Protein



Cat. No. BTN-HM123

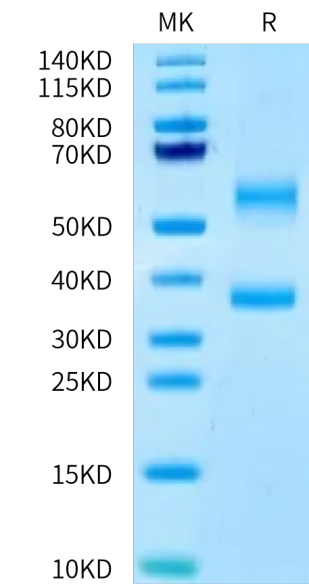
Description	
Source	Recombinant Human BTN2A1&BTN3A1 complex Protein is expressed from HEK293 with His tag at the C-terminus of BTN2A1 and Flag tag at the C-terminus of BTN3A1. It contains Gln29-Ala248 (BTN2A1) acidic tail and Gln30-Gly254 (BTN3A1) basic tail.
Accession	Q7KYR7-1(BTN2A1)&O00481-1(BTN3A1)
Molecular Weight	The protein has a predicted MW of 30.74 kDa (BTN2A1) and 30.25 kDa (BTN3A1). Due to glycosylation, the protein migrates to 53-63 kDa and 33-38 kDa based on Bis-Tris PAGE result.
Endotoxin	Less than 1 EU per µg by the LAL method.
Purity	> 95% as determined by Bis-Tris PAGE > 95% as determined by HPLC

Formulation and Storage	
Formulation	Lyophilized from 0.22 µm filtered solution in PBS (pH 7.4). Normally 8% trehalose is added as protectant before lyophilization.
Reconstitution	Dissolve the lyophilized protein in distilled water. Please refer to the Certificate of Analysis for detailed instructions.
Storage	-20 to -80°C for 12 months as supplied from date of receipt.-80°C for 3 months after reconstitution.Recommend to aliquot the protein into smaller quantities for optimal storage. Please minimize freeze-thaw cycles.

Background	
BTN2A1 and BTN3A1 clearly play highly distinct roles in Vγ9Vδ2 T cell detection of P-Ag-exposed cells. BTN2A1&BTN3A1, a protein complex which contains heterodimeric BTN2A1 and BTN3A1 extracellular domains (ECD), is critical to enhance cytotoxic killing by Vγ9Vδ2 T cells.	

Assay Data

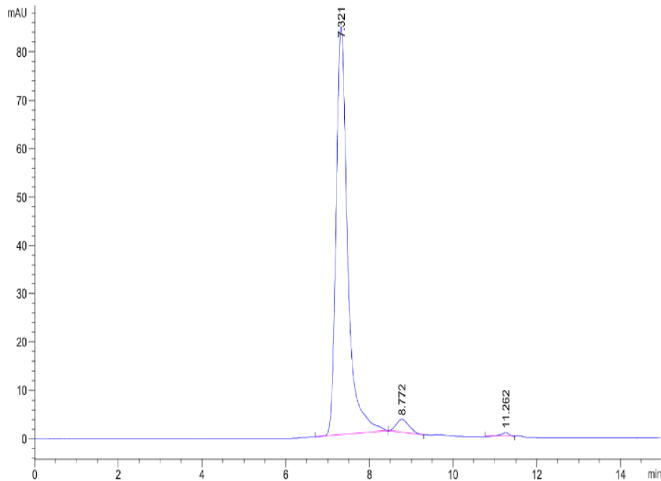
Bis-Tris PAGE



Human BTN2A1&BTN3A1 complex on Bis-Tris PAGE under reduced condition. The purity is greater than 95%.

SEC-HPLC

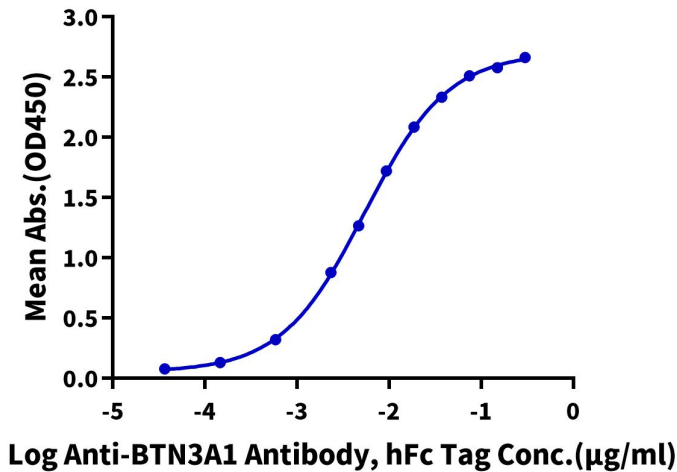
Assay Data



The purity of Human BTN2A1&BTN3A1 complex is greater than 95% as determined by SEC-HPLC.

ELISA Data

Human BTN3A1&BTN2A1, His Tag ELISA
0.1µg Human BTN3A1&BTN2A1, His Tag Per Well



Immobilized Human BTN3A1&BTN2A1, His Tag at 1µg/ml (100µl/well) on the plate. Dose response curve for Anti-BTN3A1 Antibody, hFc Tag with the EC50 of 5.5ng/ml determined by ELISA (QC Test).