

Human Complement C5a Protein



Cat. No. C5A-HE15A

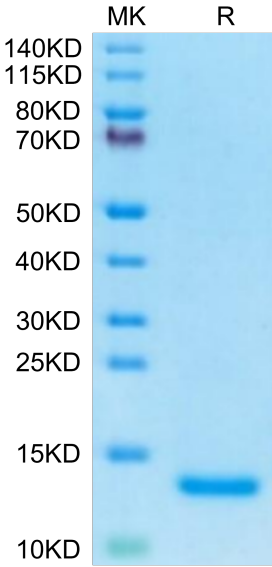
Description	
Source	Recombinant Human C5a Protein is expressed from E.coli with His tag at the N-Terminus. It contains Thr678-Arg751.
Accession	P01031
Molecular Weight	The protein has a predicted MW of 9.37 kDa. The protein migrates to 13-14 kDa based on Bis-Tris PAGE result.
Endotoxin	Less than 1 EU per µg by the LAL method.
Purity	> 95% as determined by Bis-Tris PAGE

Formulation and Storage	
Formulation	Supplied as 0.22µm filtered solution in 20mM PB, 500mM NaCl, 10% Glycerol (pH 7.4).
Storage	Valid for 12 months from date of receipt when stored at -80°C.Recommend to aliquot the protein into smaller quantities for optimal storage. Please minimize freeze-thaw cycles.

Background	
The anaphylatoxin C5a is an extremely potent proinflammatory peptide produced during activation of the complement system. The structure of C5a includes a core region (N-terminal residues 1-63) consisting of four, antiparallel alpha-helices held together by three disulfide linkages and a structured C-terminal tail (residues 64-74).	

Assay Data

Bis-Tris PAGE



Human C5a on Bis-Tris PAGE under reduced condition. The purity is greater than 95%.