

# Human Complement C3 Protein

Cat. No. CC3-HM101



## Description

Source	Recombinant Human Complement C3 Protein is expressed from HEK293 with His tag at the C-Terminus.
	It contains Ser23-Asn1663.
Accession	P01024
Molecular Weight	The protein has a predicted MW of 188.52 kDa. Due to enzyme lysis and glycosylation, the protein migrates to 67-68 kDa, 110-115 kDa and 140-160 kDa based on Bis-Tris PAGE result.
Endotoxin	Less than 1 EU per µg by the LAL method.
Purity	> 95% as determined by Bis-Tris PAGE
	> 95% as determined by HPLC

## Formulation and Storage

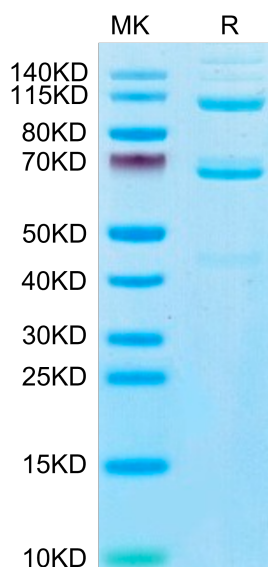
Formulation	Lyophilized from 0.22µm filtered solution in PBS (pH 7.4). Normally 8% trehalose is added as protectant before lyophilization.
Reconstitution	Dissolve the lyophilized protein in distilled water. Please refer to the Certificate of Analysis for detailed instructions.
Storage	-20 to -80°C for 12 months as supplied from date of receipt. -80°C for 3 months after reconstitution. Recommend to aliquot the protein into smaller quantities for optimal storage. Please minimize freeze-thaw cycles.

## Background

Complement component 3 (C3), a pivotal molecule in the complement system, is an essential immune mediator in various diseases, including psoriasis. C3 deficiency promoted imiquimod-induced skin cell apoptosis and supported greater proportions of IFN-γ T cells in the inflamed tissues.

## Assay Data

### Bis-Tris PAGE



Human Complement C3 on Bis-Tris PAGE under reduced condition. The purity is greater than 95%.

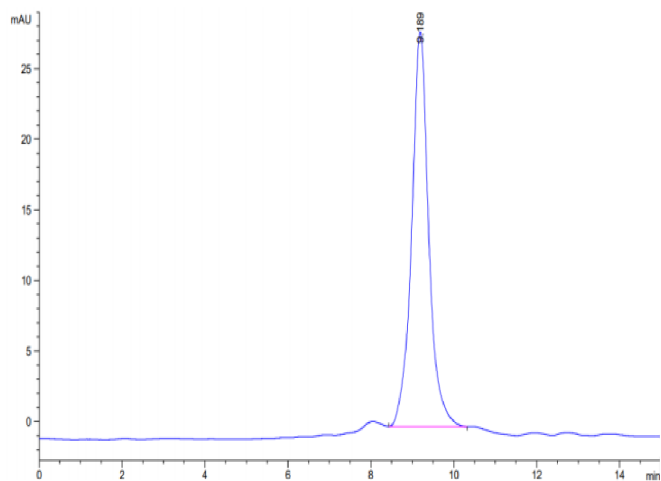
### SEC-HPLC

## Human Complement C3 Protein

Cat. No. CC3-HM101

KACATUS

### Assay Data



The purity of Human Complement C3 is greater than 95% as determined by SEC-HPLC.