

Mouse CCL8 Protein

Cat. No. CCL-ME108



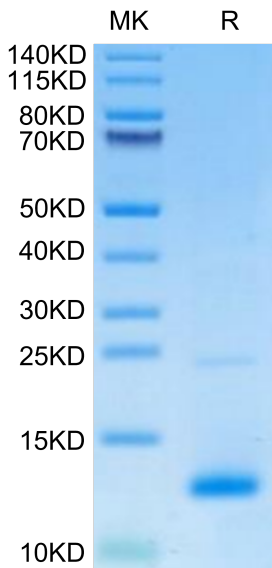
Description	
Source	Recombinant Mouse CCL8 Protein is expressed from E.coli without tag. It contains Gly24-Pro97.
Accession	Q9Z121
Molecular Weight	The protein has a predicted MW of 8.51 kDa. The protein migrates to 12-13 kDa based on Bis-Tris PAGE result.
Endotoxin	Less than 1 EU per µg by the LAL method.
Purity	> 95% as determined by Bis-Tris PAGE > 95% as determined by HPLC

Formulation and Storage	
Formulation	Supplied as 0.22µm filtered solution in 20mM PB, 300mM Nacl (pH 7.4).
Storage	Valid for 12 months from date of receipt when stored at -80°C.Recommend to aliquot the protein into smaller quantities for optimal storage. Please minimize freeze-thaw cycles.

Background	
C-C motif Chemokine ligand 8 (CCL8) has been found in diseases' pathogenesis. Exogenous CCL8 enhanced the proliferative and migration potential of LE cells and their motility in the environment with its stable concentration.of all the examined factors, chemokine CCL8 participates in the establishment of a proper environment for embryo implantation.	

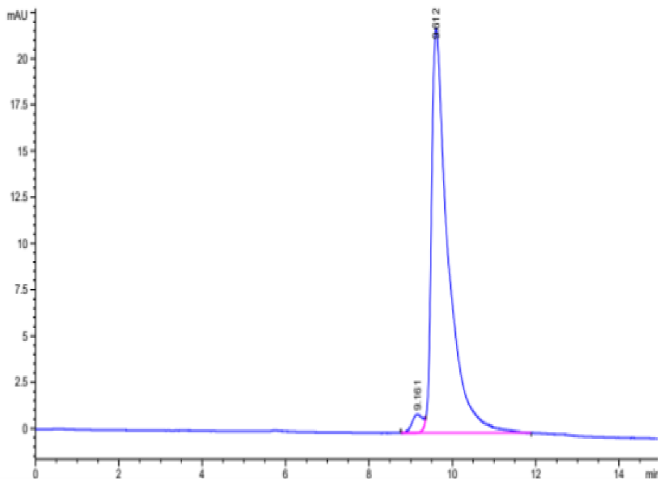
Assay Data

Bis-Tris PAGE



Mouse CCL8 on Bis-Tris PAGE under reduced condition. The purity is greater than 95%.

SEC-HPLC



The purity of Mouse CCL8 is greater than 95% as determined by SEC-HPLC.