

Biotinylated Human CD20/MS4A1 Protein



Cat. No. CD2-HE120B

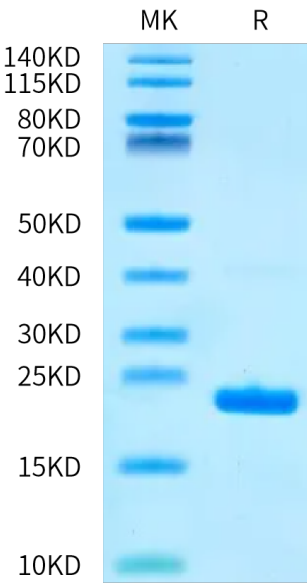
Description	
Source	Recombinant Biotinylated Human CD20/MS4A1 Protein is expressed from E.coli with His tag and Avi tag at the C-Terminus. It contains Ile141-Ser188.
Accession	P11836-1
Molecular Weight	The protein has a predicted MW of 16.8 kDa same as Bis-Tris PAGE result.
Endotoxin	Less than 1 EU per µg by the LAL method.
Purity	> 95% as determined by Bis-Tris PAGE

Formulation and Storage	
Formulation	Supplied as 0.22µm filtered solution in 20mM PB, 500mM NaCl, 0.4M Urea, 10% glycerol, 1mM GSH, 0.1mM GSSG (pH 7.0).
Storage	Valid for 12 months from date of receipt when stored at -80°C. Recommend to aliquot the protein into smaller quantities for optimal storage. Please minimize freeze-thaw cycles.

Background	
B-lymphocyte antigen CD20 or CD20 is an activated-glycosylated phosphoprotein expressed on the surface of all B-cells beginning at the pro-B phase (CD45R , CD117) and progressively increasing in concentration until maturity.CD20 is the target of the monoclonal antibodies rituximab, ocrelizumab, obinutuzumab, ofatumumab, ibritumomab tiuxetan, tositumomab, and ublituximab, which are all active agents in the treatment of all B cell lymphomas, leukemias, and B cell-mediated autoimmune diseases.	

Assay Data

Bis-Tris PAGE

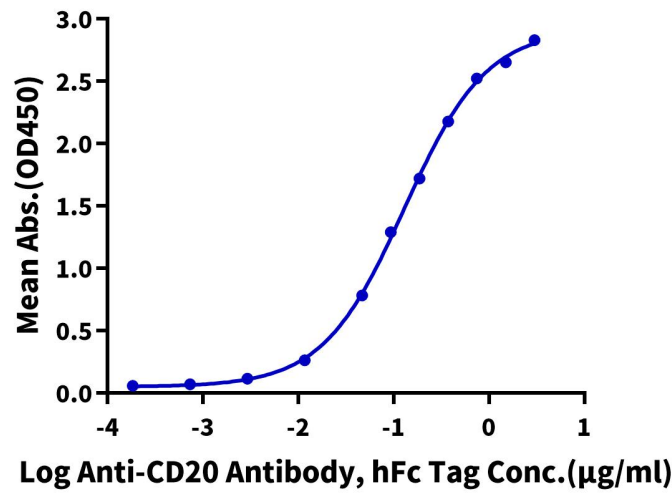


Biotinylated Human CD20 on Bis-Tris PAGE under reduced condition. The purity is greater than 95%.

ELISA Data

Biotinylated Human CD20, His-Avi Tag ELISA

0.2µg Biotinylated Human CD20, His-Avi Tag Per Well



Immobilized Biotinylated Human CD20, His-Avi Tag at 2µg/ml (100µl/well) on the streptavidin precoated plate (5µg/ml). Dose response curve for Anti-CD20 Antibody, hFc Tag with the EC50 of 0.13µg/ml determined by ELISA (QC Test).