

Biotinylated Human CD20/MS4A1 Protein-Nanodisc

Cat. No. CD2-HM12NB



Description

Source	Recombinant Biotinylated Human CD20/MS4A1 Protein-Nanodisc is expressed from HEK293 with His tag at the C-terminus.
	It contains Met1-Pro297.
Accession	P11836-1
Molecular Weight	The protein has a predicted MW of 46.0 kDa.
Endotoxin	Less than 1 EU per µg by the LAL method.

Formulation and Storage

Formulation	Supplied as 0.22 µm filtered solution in PBS, 200mM L-Arginine (pH 7.4). Notice: Not recommended for flow cytometry in mammalian cells.
Storage	Valid for 6 months from date of receipt when stored at -80°C. Recommend to aliquot the protein into smaller quantities for optimal storage. Please minimize freeze-thaw cycles.

Background

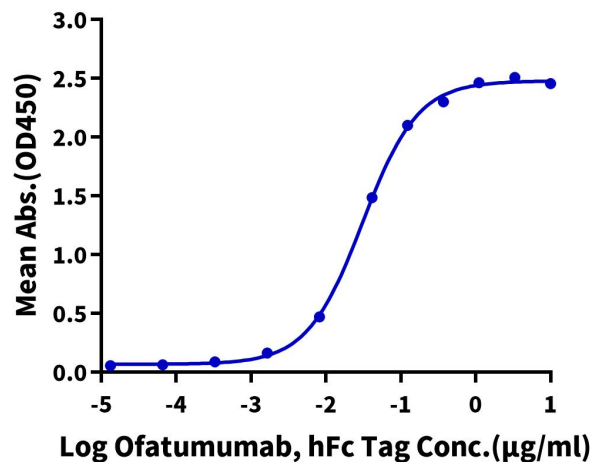
B-lymphocyte antigen CD20 or CD20 is an activated-glycosylated phosphoprotein expressed on the surface of all B-cells beginning at the pro-B phase (CD45R , CD117) and progressively increasing in concentration until maturity. CD20 is the target of the monoclonal antibodies rituximab, ocrelizumab, obinutuzumab, ofatumumab, ibritumomab tiuxetan, tositumomab, and ublituximab, which are all active agents in the treatment of all B cell lymphomas, leukemias, and B cell-mediated autoimmune diseases.

Assay Data

ELISA Data

Biotinylated Human CD20 Nanodisc, His Tag ELISA

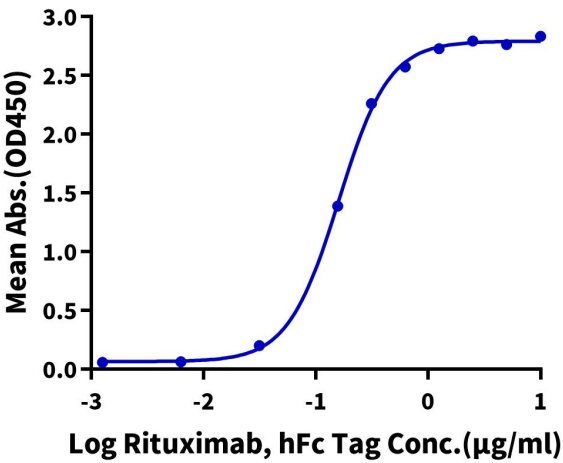
0.2µg Biotinylated Human CD20 Nanodisc, His Tag Per Well



Immobilized Biotinylated Human CD20 Nanodisc, His Tag at 2µg/ml (100µl/well) on the streptavidin precoated plate (5µg/ml). Dose response curve for Ofatumumab, hFc Tag with the EC50 of 30.8ng/ml determined by ELISA.

Biotinylated Human CD20 Nanodisc, His Tag ELISA

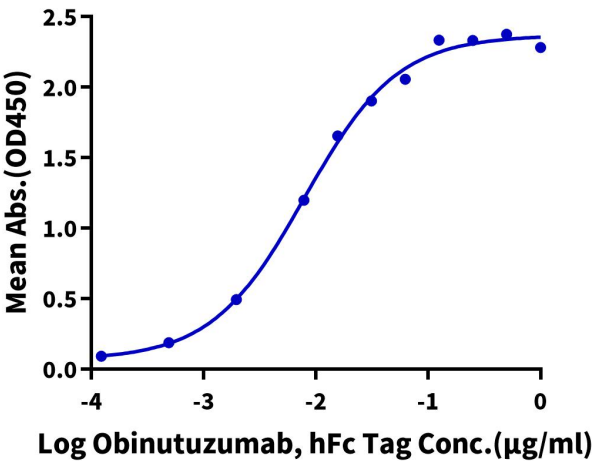
0.2µg Biotinylated Human CD20 Nanodisc, His Tag Per Well



Immobilized Biotinylated Human CD20 Nanodisc, His Tag at 2µg/ml (100µl/well) on the streptavidin precoated plate (5µg/ml). Dose response curve for Rituximab, hFc Tag with the EC50 of 0.16µg/ml determined by ELISA.

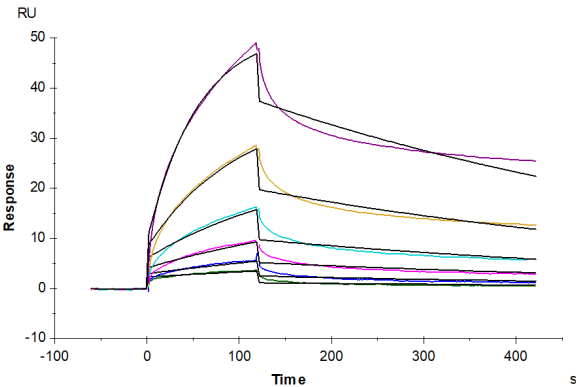
Biotinylated Human CD20 Nanodisc, His Tag ELISA

0.2µg Biotinylated Human CD20 Nanodisc, His Tag Per Well



Immobilized Biotinylated Human CD20 Nanodisc, His Tag at 2µg/ml (100µl/well) on the streptavidin precoated plate (5µg/ml). Dose response curve for Obinutuzumab, hFc Tag with the EC50 of 7.9ng/ml determined by ELISA.

SPR Data



Biotinylated Human CD20 Nanodisc captured on CM5 Chip via Streptavidin can bind Rituximab, hFc Tag with an affinity constant of 10.21 nM as determined in SPR assay (Biacore T200).

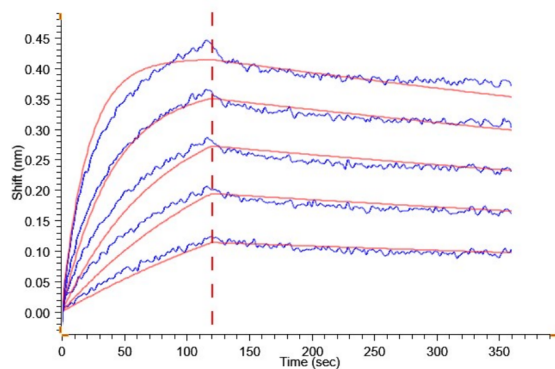
BLI Data

Biotinylated Human CD20/MS4A1 Protein-Nanodisc

Cat. No. CD2-HM12NB



Assay Data



Loaded Biotinylated Human CD20 Nanodisc, His Tag on Streptavidin-Biosensor can bind Rituximab, hFc Tag with an affinity constant of 6.94 nM as determined in BLI assay (Gator® Prime).