

Human CD24 Protein

Cat. No. CD2-HM224



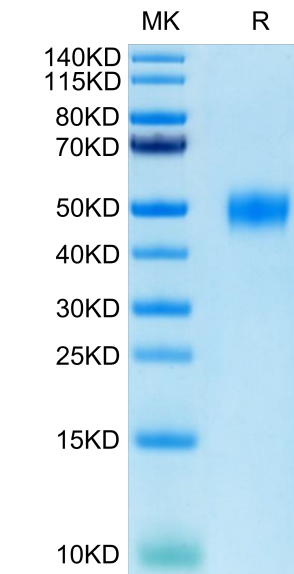
Description	
Source	Recombinant Human CD24 Protein is expressed from HEK293 with hFc tag at the C-Terminus. It contains Ser27-Gly59.
Accession	P25063
Molecular Weight	The protein has a predicted MW of 29.9 kDa. Due to glycosylation, the protein migrates to 45-55 kDa based on Bis-Tris PAGE result.
Endotoxin	Less than 1 EU per µg by the LAL method.
Purity	> 95% as determined by Bis-Tris PAGE > 95% as determined by HPLC

Formulation and Storage	
Formulation	Lyophilized from 0.22µm filtered solution in PBS (pH 7.4). Normally 8% trehalose is added as protectant before lyophilization.
Reconstitution	Dissolve the lyophilized protein in distilled water. Please refer to the Certificate of Analysis for detailed instructions.
Storage	-20 to -80°C for 12 months as supplied from date of receipt. -80°C for 3 months after reconstitution. Recommend to aliquot the protein into smaller quantities for optimal storage. Please minimize freeze-thaw cycles.

Background	
CD24 is a sialoglycoprotein expressed at the surface of most B lymphocytes and differentiating neuroblasts. It is also expressed on neutrophils and neutrophil precursors from the myelocyte stage onwards. The potential for targeting CD24 in cancer therapy seems promising, as CD24 is overexpressed in many human cancers.	

Assay Data

Bis-Tris PAGE



Human CD24 on Bis-Tris PAGE under reduced conditions. The purity is greater than 95%.

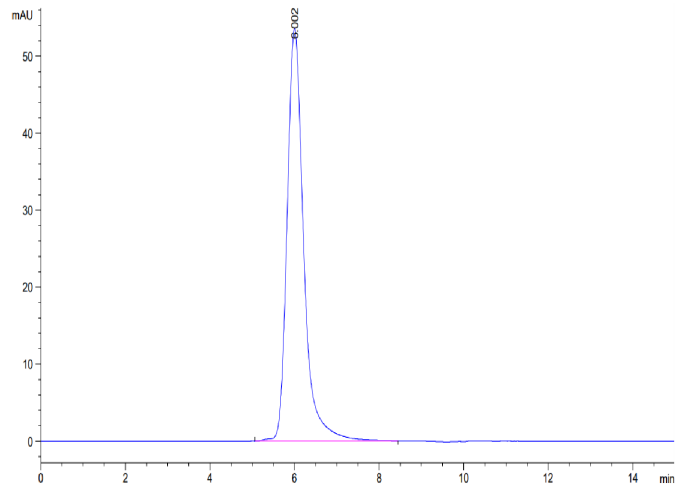
SEC-HPLC

Human CD24 Protein

Cat. No. CD2-HM224



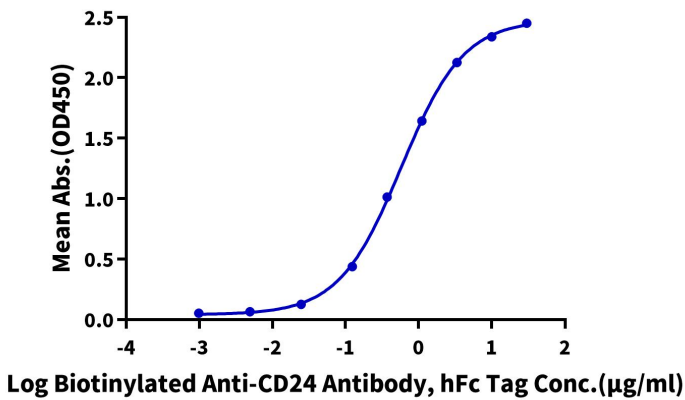
Assay Data



The purity of Human CD24 is greater than 95% as determined by SEC-HPLC.

ELISA Data

**Human CD24 , hFc Tag ELISA**  
0.05µg Human CD24 , hFc Tag Per Well



Immobilized Human CD24, hFc Tag at 0.5µg/ml (100µl/well) on the plate. Dose response curve for Biotinylated Anti-CD24 Antibody, hFc Tag with the EC50 of 0.58µg/ml determined by ELISA.