

Human CD200 R1/CRTR2 Protein

Cat. No. CD2-HM4R1



Description

Source	Recombinant Human CD200 R1/CRTR2 Protein is expressed from HEK293 with His tag and Avi tag at the C-Terminus.
	It contains Ala27-Leu266.
Accession	AAQ19772
Molecular Weight	The protein has a predicted MW of 29.7 kDa. Due to glycosylation, the protein migrates to 52-68 kDa based on Bis-Tris PAGE result.
Endotoxin	Less than 1 EU per µg by the LAL method.
Purity	> 95% as determined by Bis-Tris PAGE
	> 95% as determined by HPLC

Formulation and Storage

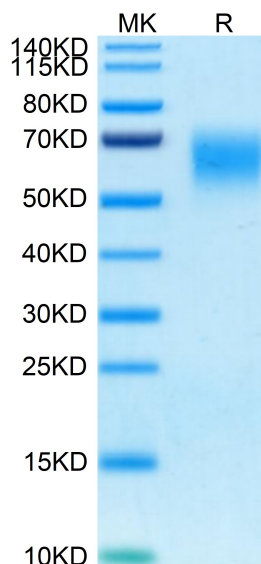
Formulation	Lyophilized from 0.22µm filtered solution in PBS (pH 7.4). Normally 8% trehalose is added as protectant before lyophilization.
Reconstitution	Dissolve the lyophilized protein in distilled water. Please refer to the Certificate of Analysis for detailed instructions.
Storage	-20 to -80°C for 12 months as supplied from date of receipt. -80°C for 3 months after reconstitution. Recommend to aliquot the protein into smaller quantities for optimal storage. Please minimize freeze-thaw cycles.

Background

CD200Fc, a chimeric molecule including the extracellular domain of CD200 and a murine IgG2a Fc region, regulates immune responses following engagement of a cell surface receptor, CD200R, expressed on cells of the myeloid and T cell lineage. A recent report focused attention on a family of CD200Rs, but concluded that only one member used CD200 as its ligand.

Assay Data

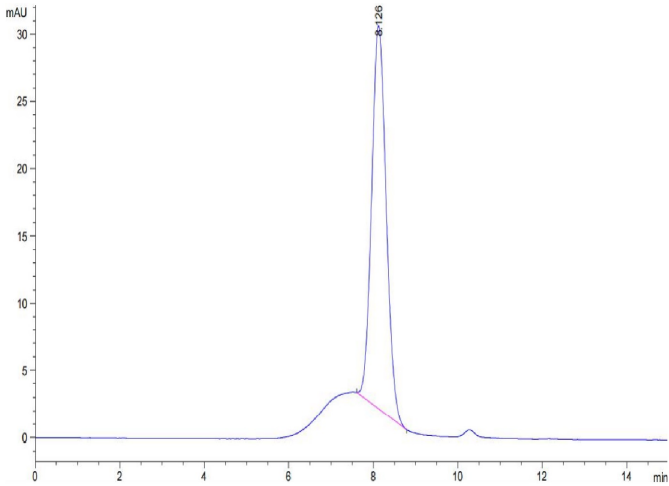
Bis-Tris PAGE



Human CD200 R1 on Bis-Tris PAGE under reduced condition. The purity is greater than 95%.

SEC-HPLC

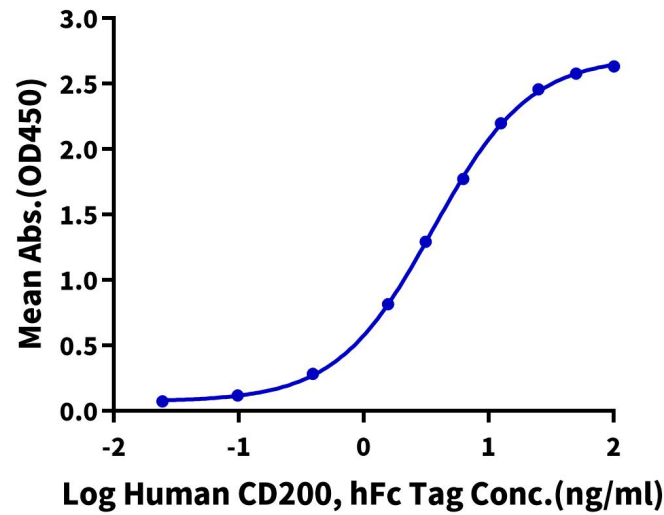
Assay Data



The purity of Human CD200 R1 is greater than 95% as determined by SEC-HPLC.

ELISA Data

Human CD200 R1, His Tag ELISA
0.2µg Human CD200 R1, His Tag Per Well



Immobilized Human CD200 R1, His Tag at 2µg/ml (100µl/Well) on the plate. Dose response curve for Human CD200, hFc Tag with the EC50 of 3.6ng/ml determined by ELISA (QC Test).