

Biotinylated Cynomolgus CD3E&CD3G/CD3 epsilon&CD3 gamma Protein (Primary Amine Labeling)



Cat. No. CD3-CM202B

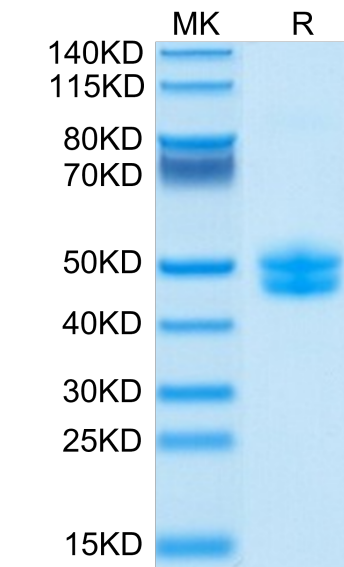
Description	
Source	Recombinant Biotinylated Cynomolgus CD3E&CD3G/CD3 epsilon&CD3 gamma Protein (Primary Amine Labeling) is expressed from HEK293 with hFc tag at the C-Terminus of CD3E and CD3G. It contains Gln22-Asp117(CD3E) and Gln23-Thr113(CD3G).
Accession	Q95LI5.2(CD3E)&Q95LI7(CD3G)
Molecular Weight	The protein has a predicted MW of 36.9 kDa (CD3E) and 36.5 kDa (CD3G). Due to glycosylation,the protein migrates to 44-46 kDa&46-48 kDa based on Bis-Tris PAGE result.
Endotoxin	Less than 1 EU per µg by the LAL method.
Purity	> 95% as determined by Bis-Tris PAGE > 95% as determined by HPLC

Formulation and Storage	
Formulation	Lyophilized from 0.22µm filtered solution in PBS (pH 7.4). Normally 8% trehalose is added as protectant before lyophilization.
Reconstitution	Dissolve the lyophilized protein in distilled water. Please refer to the Certificate of Analysis for detailed instructions.
Storage	-20 to -80°C for 12 months as supplied from date of receipt.-80°C for 3 months after reconstitution.Recommend to aliquot the protein into smaller quantities for optimal storage. Please minimize freeze-thaw cycles.

Background	
T-cell surface glycoprotein CD3 epsilon & CD3 gamma chain, also known as CD3E & CD3G , are single-pass type I membrane proteins.When antigen presenting cells (APCs) activate T-cell receptor (TCR), TCR-mediated signals are transmitted across the cell membrane by the CD3 chains CD3D, CD3E, CD3G and CD3Z. All CD3 chains contain immunoreceptor tyrosine-based activation motifs (ITAMs) in their cytoplasmic domain.	

Assay Data

Bis-Tris PAGE



Biotinylated Cynomolgus CD3E&CD3G on Bis-Tris PAGE under reduced conditions. The purity is greater than 95%.

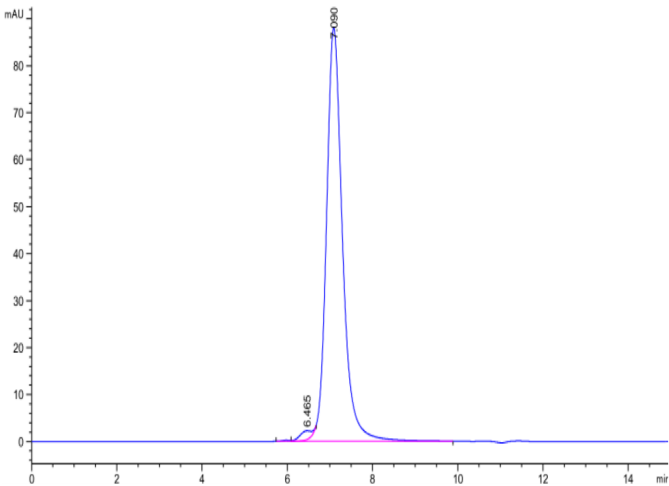
SEC-HPLC

Biotinylated Cynomolgus CD3E&CD3G/CD3 epsilon&CD3 gamma Protein (Primary Amine Labeling)



Cat. No. CD3-CM202B

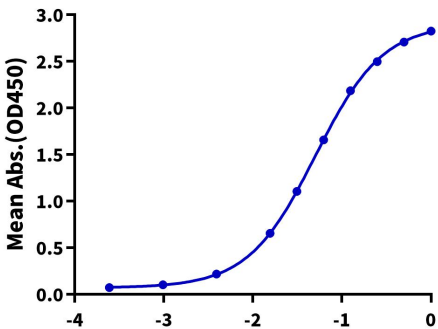
Assay Data



The purity of Biotinylated Cynomolgus CD3E&CD3G was greater than 95% as determined by SEC-HPLC.

ELISA Data

Biotinylated Cynomolgus CD3E&CD3G, hFc Tag ELISA
0.2µg Anti-CD3 Antibody, hFc Tag Per Well



Immobilized Anti-CD3 Antibody, hFc Tag at 2µg/ml (100µl/well) on the plate. Dose response curve for Biotinylated Cynomolgus CD3E&CD3G, hFc Tag with the EC50 of 50.5ng/ml determined by ELISA (QC Test).