

Biotinylated Human CD3E&CD3G/CD3 epsilon&CD3 gamma Protein (Primary Amine Labeling)



Cat. No. CD3-HM157B

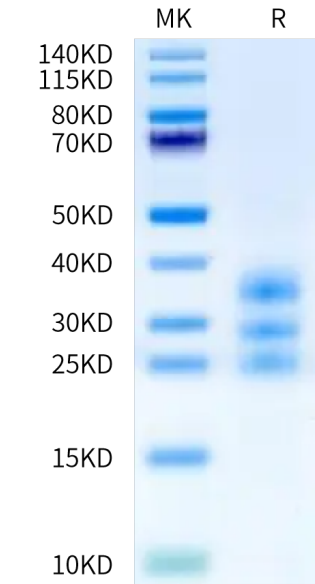
Description	
Source	Recombinant Biotinylated Human CD3E&CD3G/CD3 epsilon&CD3 gamma Protein (Primary Amine Labeling) is expressed from HEK293 with His tag at the C-Terminus of CD3G. It contains Asp23-Asp126 (CD3E) and Gln23-Ser116 (CD3G).
Accession	P07766(CD3E)&P09693(CD3G)
Molecular Weight	The protein has a predicted MW of 17.9 kDa (CD3E) and 17.9 kDa (CD3G). Due to glycosylation, the protein migrates to 25-40 kDa based on Bis-Tris PAGE result.
Endotoxin	Less than 1 EU per µg by the LAL method.
Purity	> 95% as determined by Bis-Tris PAGE > 95% as determined by HPLC

Formulation and Storage	
Formulation	Lyophilized from 0.22µm filtered solution in PBS (pH 7.4). Normally 8% trehalose is added as protectant before lyophilization.
Reconstitution	Dissolve the lyophilized protein in distilled water. Please refer to the Certificate of Analysis for detailed instructions.
Storage	-20 to -80°C for 12 months as supplied from date of receipt. -80°C for 3 months after reconstitution. Recommend to aliquot the protein into smaller quantities for optimal storage. Please minimize freeze-thaw cycles.

Background	
T-cell surface glycoprotein CD3 epsilon & CD3 gamma chain, also known as CD3E & CD3G , are single-pass type I membrane proteins. When antigen presenting cells (APCs) activate T-cell receptor (TCR), TCR-mediated signals are transmitted across the cell membrane by the CD3 chains CD3D, CD3E, CD3G and CD3Z. All CD3 chains contain immunoreceptor tyrosine-based activation motifs (ITAMs) in their cytoplasmic domain.	

Assay Data

Bis-Tris PAGE



Biotinylated Human CD3E&CD3G on Bis-Tris PAGE under reduced condition. The purity is greater than 95%.

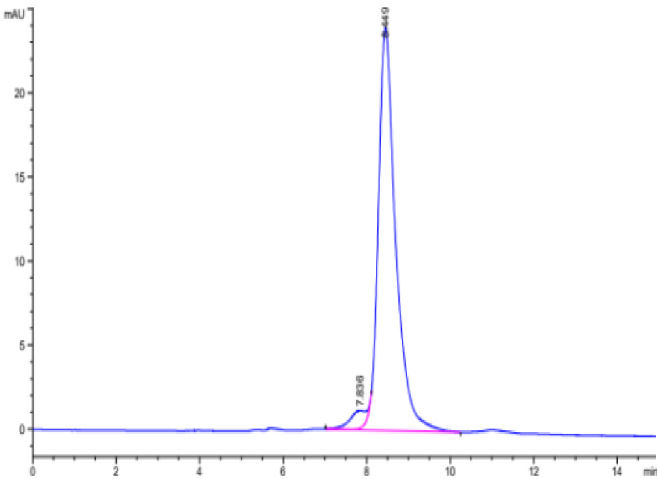
SEC-HPLC

Biotinylated Human CD3E&CD3G/CD3 epsilon&CD3 gamma Protein (Primary Amine Labeling)



Cat. No. CD3-HM157B

Assay Data

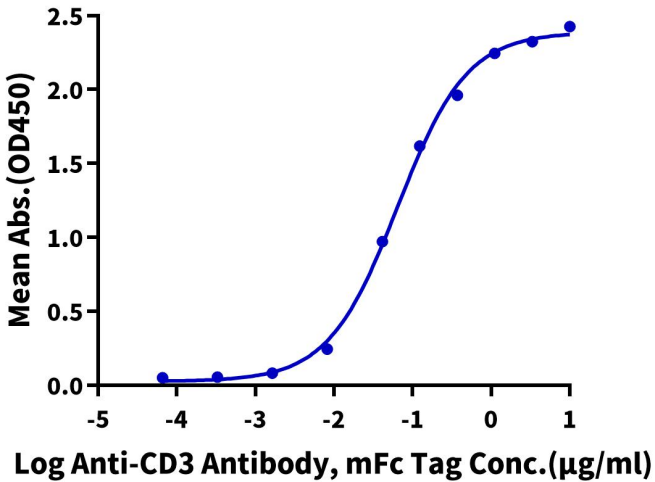


The purity of Biotinylated Human CD3E&CD3G is greater than 95% as determined by SEC-HPLC.

ELISA Data

Biotinylated Human CD3E&CD3G, His Tag ELISA

0.2µg Biotinylated Human CD3E&CD3G, His Tag Per Well



Immobilized Biotinylated Human CD3E&CD3G, His Tag at 2µg/ml (100µl/well) on the streptavidin precoated plate (5µg/ml). Dose response curve for Anti-CD3 Antibody, mFc Tag with the EC50 of 64.5ng/ml determined by ELISA (QC Test).