

# Biotinylated Human Siglec-3/CD33 Protein

Cat. No. CD3-HM433B

## Description

<b>Source</b>	Recombinant Biotinylated Human Siglec-3/CD33 Protein is expressed from HEK293 with His tag and Avi tag at the C-Terminus. It contains Asp18-His259.
<b>Accession</b>	P20138-1
<b>Molecular Weight</b>	The protein has a predicted MW of 29.6 kDa. Due to glycosylation, the protein migrates to 48-58 kDa based on Bis-Tris PAGE result.
<b>Endotoxin</b>	Less than 1 EU per $\mu$ g by the LAL method.
<b>Purity</b>	> 95% as determined by Bis-Tris PAGE > 95% as determined by HPLC

## Formulation and Storage

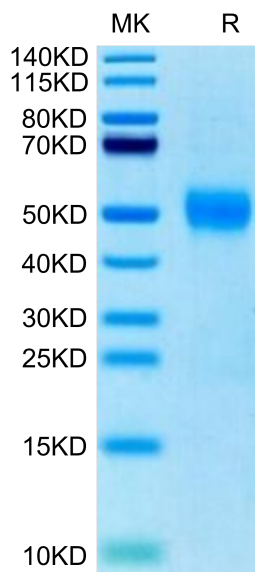
<b>Formulation</b>	Supplied as 0.22 $\mu$ m filtered solution in 50mM MES, 500mM NaCl, 200mM L-arginine (pH 7.4).
<b>Storage</b>	Valid for 12 months from date of receipt when stored at -80°C. Recommend to aliquot the protein into smaller quantities for optimal storage. Please minimize freeze-thaw cycles.

## Background

Sialic-acid-binding immunoglobulin-like lectin (Siglec) that plays a role in mediating cell-cell interactions and in maintaining immune cells in a resting state. They are sialoadhesin/CD169/Siglec-1, CD22/Siglec-2, CD33/Siglec-3, Myelin-Associated Glycoprotein (MAG/Siglec-4a) and Siglecs 5 to 11. To date, no Siglec has been shown to recognized any cell surface ligand other than sialic acids, suggesting that interactions with glycans containing this carbohydrate are important in mediating the biological functions of Siglecs.

## Assay Data

### Bis-Tris PAGE



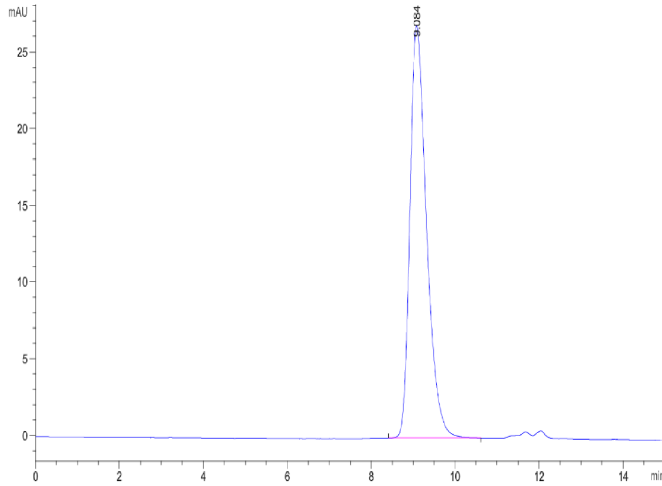
Biotinylated Human Siglec-3 on Bis-Tris PAGE under reduced condition. The purity is greater than 95%.

### SEC-HPLC

# Biotinylated Human Siglec-3/CD33 Protein

Cat. No. CD3-HM433B

## Assay Data

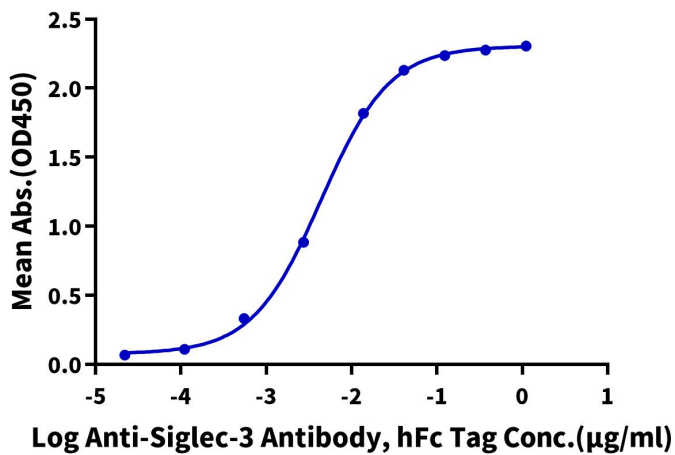


The purity of Biotinylated Human Siglec-3 is greater than 95% as determined by SEC-HPLC.

## ELISA Data

### Biotinylated Human Siglec-3, His Tag ELISA

0.05µg Biotinylated Human Siglec-3, His Tag Per Well



Immobilized Biotinylated Human Siglec-3, His Tag at 0.5µg/ml (100µl/Well) on streptavidin (5µg/ml) precoated plate. Dose response curve for Anti-Siglec-3 Antibody, hFc Tag with the EC50 of 4.4ng/ml determined by ELISA.