

# Cynomolgus CD46 Protein

Cat. No. CD4-CM146



## Description

Source	Recombinant Cynomolgus CD46 Protein is expressed from HEK293 with His tag at the C-Terminus.
	It contains Cys35-Asp329.
Accession	A0A2K5WCS2
Molecular Weight	The protein has a predicted MW of 34.05 kDa. Due to glycosylation, the protein migrates to 50-70 kDa based on Bis-Tris PAGE result.
Endotoxin	Less than 1 EU per µg by the LAL method.
Purity	> 95% as determined by Bis-Tris PAGE
	> 95% as determined by HPLC

## Formulation and Storage

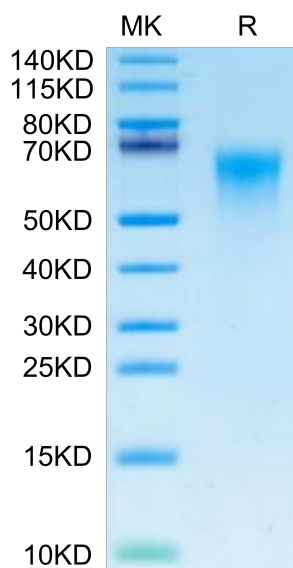
Formulation	Lyophilized from 0.22µm filtered solution in PBS (pH 7.4). Normally 8% trehalose is added as protectant before lyophilization.
Reconstitution	Dissolve the lyophilized protein in distilled water. Please refer to the Certificate of Analysis for detailed instructions.
Storage	-20 to -80°C for 12 months as supplied from date of receipt. -80°C for 3 months after reconstitution. Recommend to aliquot the protein into smaller quantities for optimal storage. Please minimize freeze-thaw cycles.

## Background

CD46 was discovered in 1986 during a search for novel C3b-binding proteins. CD46 is expressed ubiquitously and functions as a co-factor in the factor I-mediated proteolytic cleavage of C3b and C4b. Its vital role in preventing complement deposition on host tissue is underpinned by the fact that deficiency of CD46 is a predisposing factor for numerous disease conditions arising from complement-mediated 'self-attack'.

## Assay Data

### Bis-Tris PAGE



Cynomolgus CD46 on Bis-Tris PAGE under reduced condition. The purity is greater than 95%.

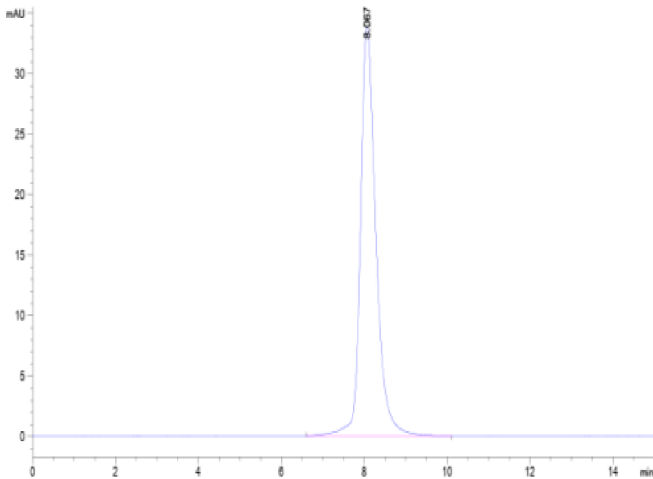
### SEC-HPLC

Cynomolgus CD46 Protein

Cat. No. CD4-CM146



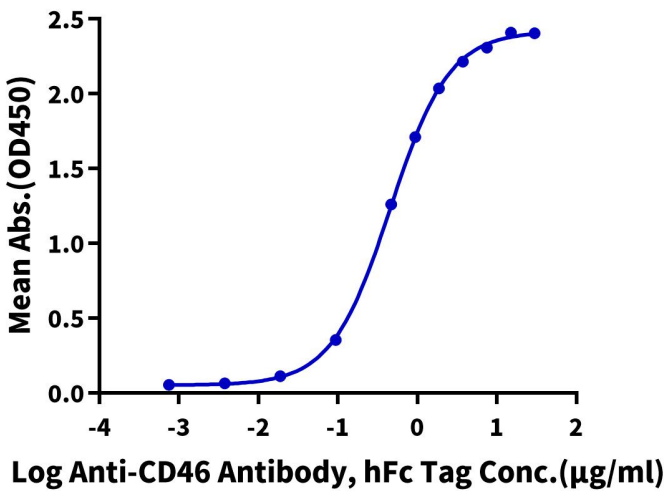
Assay Data



The purity of Cynomolgus CD46 is greater than 95% as determined by SEC-HPLC.

ELISA Data

Cynomolgus CD46, His Tag ELISA  
0.5µg Cynomolgus CD46, His Tag Per Well



Immobilized Cynomolgus CD46, His Tag at 5µg/ml (100µl/well) on the plate. Dose response curve for Anti-CD46 Antibody, hFc Tag with the EC50 of 0.46µg/ml determined by ELISA (QC Test).