

# Human CD46 Protein

Cat. No. CD4-HM146



## Description

<b>Source</b>	Recombinant Human CD46 Protein is expressed from HEK293 with His tag at the C-Terminus.
	It contains Cys35-Asp343.
<b>Accession</b>	P15529-1
<b>Molecular Weight</b>	The protein has a predicted MW of 35.4 kDa. Due to glycosylation, the protein migrates to 60-70 kDa based on Bis-Tris PAGE result.
<b>Endotoxin</b>	Less than 1 EU per µg by the LAL method.
<b>Purity</b>	> 95% as determined by Bis-Tris PAGE
	> 95% as determined by HPLC

## Formulation and Storage

<b>Formulation</b>	Lyophilized from 0.22µm filtered solution in PBS (pH 7.4). Normally 8% trehalose is added as protectant before lyophilization.
<b>Reconstitution</b>	Dissolve the lyophilized protein in distilled water. Please refer to the Certificate of Analysis for detailed instructions.
<b>Storage</b>	-20 to -80°C for 12 months as supplied from date of receipt. -80°C for 3 months after reconstitution. Recommend to aliquot the protein into smaller quantities for optimal storage. Please minimize freeze-thaw cycles.

## Background

CD46 was discovered in 1986 during a search for novel C3b-binding proteins. CD46 is expressed ubiquitously and functions as a co-factor in the factor I-mediated proteolytic cleavage of C3b and C4b. Its vital role in preventing complement deposition on host tissue is underpinned by the fact that deficiency of CD46 is a predisposing factor for numerous disease conditions arising from complement-mediated 'self-attack'.

## Assay Data

### Bis-Tris PAGE



Human CD46 on Bis-Tris PAGE under reduced condition. The purity is greater than 95%.

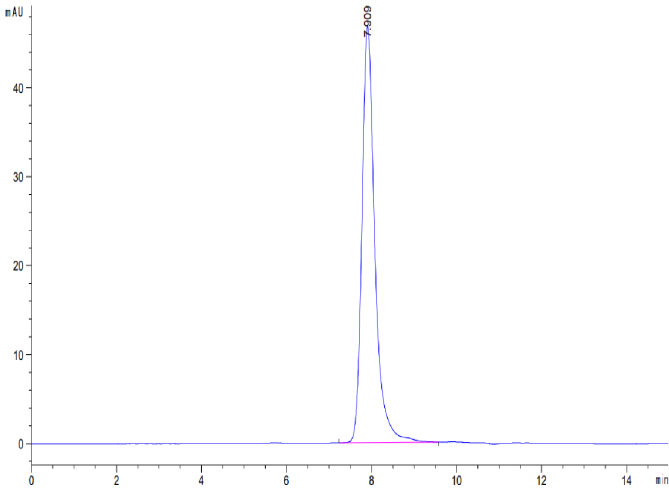
### SEC-HPLC

Human CD46 Protein

Cat. No. CD4-HM146



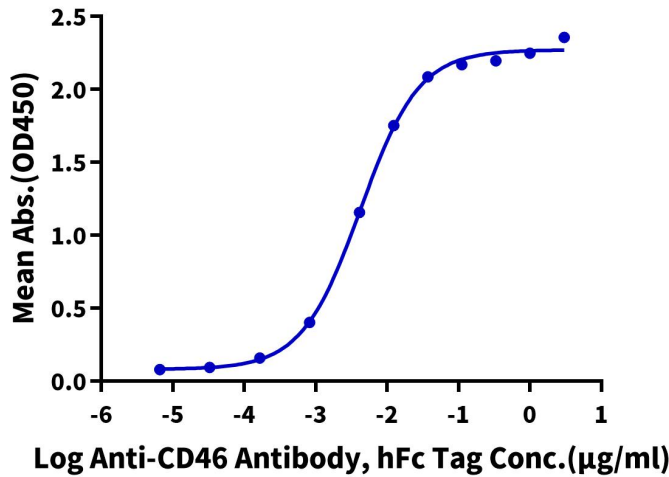
Assay Data



The purity of Human CD46 is greater than 95% as determined by SEC-HPLC.

ELISA Data

**Human CD46, His Tag ELISA**  
0.05µg Human CD46, His Tag Per Well



Immobilized Human CD46, His Tag at 0.5µg/ml (100µl/Well) on the plate. Dose response curve for Anti-CD46 Antibody, hFc Tag with the EC50 of 4.2ng/ml determined by ELISA.