

Mouse IL-17R alpha/CD217 Protein

Cat. No. CD7-MM2RA



Description

| | |
|-------------------------|---|
| Source | Recombinant Mouse IL-17R alpha/CD217 Protein is expressed from HEK293 with hFc tag at the C-Terminus. It contains Ser32-Trp322. |
| Accession | Q60943 |
| Molecular Weight | The protein has a predicted MW of 60.1 kDa. Due to glycosylation, the protein migrates to 95-110 kDa based on Bis-Tris PAGE result. |
| Endotoxin | Less than 1 EU per ug by the LAL method. |
| Purity | > 95% as determined by Bis-Tris PAGE > 95% as determined by HPLC |

Formulation and Storage

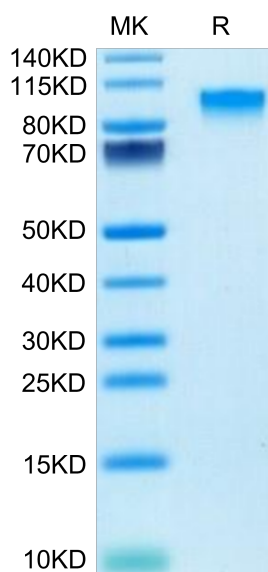
| | |
|-----------------------|---|
| Formulation | Lyophilized from 0.22µm filtered solution in PBS (pH 7.4). Normally 8% trehalose is added as protectant before lyophilization. |
| Reconstitution | Dissolve the lyophilized protein in distilled water. Please refer to the Certificate of Analysis for detailed instructions. |
| Storage | -20 to -80°C for 12 months as supplied from date of receipt. -80°C for 3 months after reconstitution. Recommend to aliquot the protein into smaller quantities for optimal storage. Please minimize freeze-thaw cycles. |

Background

Interleukin 17 (also known as CTLA8) is a T cellexpressed pleotropic cytokine. IL17 binds to IL17 receptor (IL17 R) which shares no homology with any known family of receptors. While the expression of IL17 is restricted to activated T cells, the IL17 R mRNA exhibits a broad tissue distribution, and has been detected in virtually all cells and tissues tested. The human IL17 R gene was localized to chromosome 22.

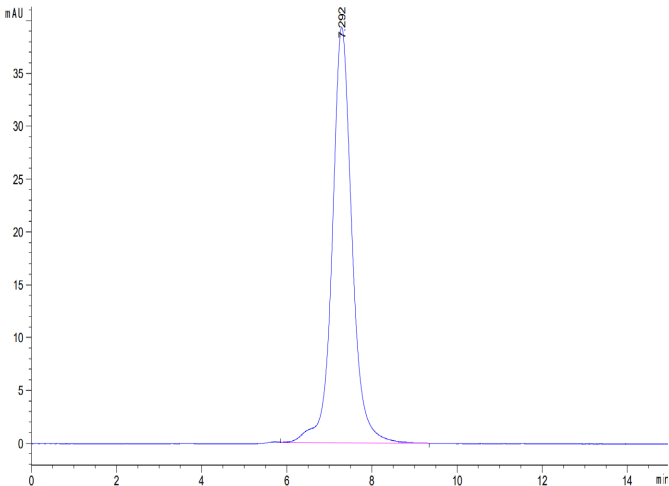
Assay Data

Bis-Tris PAGE



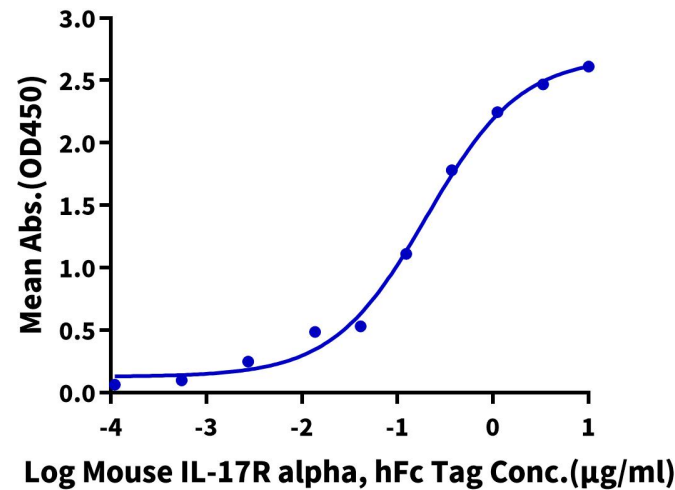
Mouse IL-17R alpha on Bis-Tris PAGE under reduced condition. The purity is greater than 95%.

SEC-HPLC



The purity of Mouse IL-17R alpha is greater than 95% as determined by SEC-HPLC.

Mouse IL-17R alpha, hFc Tag ELISA
0.1µg Mouse IL-17F, His Tag Per Well



Immobilized Mouse IL-17F, His Tag at 1µg/ml (100µl/Well) on the plate. Dose response curve for Mouse IL-17R alpha, hFc Tag with the EC50 of 0.2µg/ml determined by ELISA.