

Human CDH3/Cadherin 3 Protein



Cat. No. CDH-HM103

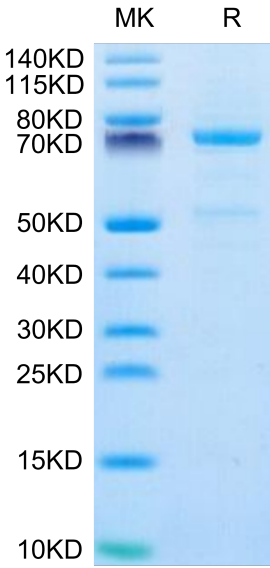
Description	
Source	Recombinant Human CDH3/Cadherin 3 Protein is expressed from HEK293 with His tag at the C-Terminus. It contains Asp108-Gly654.
Accession	P22223-1
Molecular Weight	The protein has a predicted MW of 64.32 kDa. Due to glycosylation, the protein migrates to 70-80 kDa based on Bis-Tris PAGE result.
Endotoxin	Less than 1 EU per µg by the LAL method.
Purity	> 95% as determined by Bis-Tris PAGE

Formulation and Storage	
Formulation	Lyophilized from 0.22µm filtered solution in PBS (pH 7.4). Normally 8% trehalose is added as protectant before lyophilization.
Reconstitution	Dissolve the lyophilized protein in distilled water. Please refer to the Certificate of Analysis for detailed instructions.
Storage	-20 to -80°C for 24 months as supplied from date of receipt.-80°C for 3 months after reconstitution.Recommend to aliquot the protein into smaller quantities for optimal storage. Please minimize freeze-thaw cycles.

Background	
Placental-Cadherin (CDH3), a cell adhesion molecule, is associated with the function of cells to bind with other cells and the extracellular matrix (ECM). CDH3 is highly expressed in many malignancies, and has been proved it could be a serum marker to monitor colorectal cancer. Inhibited CDH3 expression could upregulate E-cadherin, downregulated N-cadherin, which may control invasion and migration.	

Assay Data

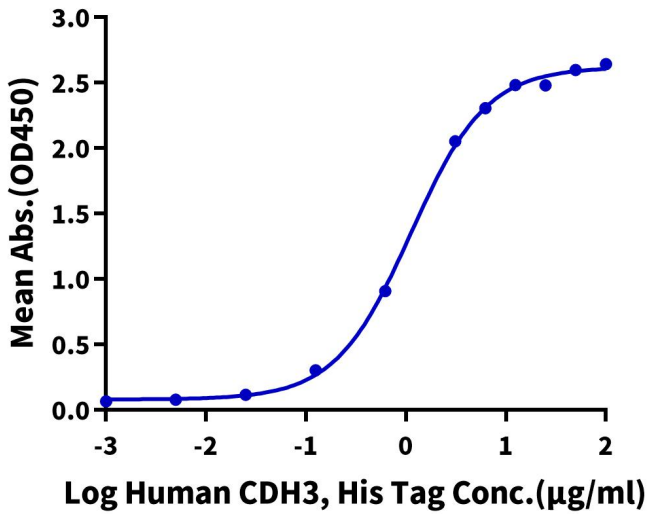
Bis-Tris PAGE



Human CDH3 on Bis-Tris PAGE under reduced condition. The purity is greater than 95%.

ELISA Data

Human CDH3, His Tag ELISA
0.2µg Anti-CDH3 Antibody, hFc Tag Per Well



Immobilized Anti-CDH3 Antibody, hFc Tag at 2µg/ml (100µl/Well) on the plate. Dose response curve for Human CDH3, His Tag with the EC50 of 1.12µg/ml determined by ELISA (QC Test).