

Human CDH6/Cadherin 6 Protein



Cat. No. CDH-HM116

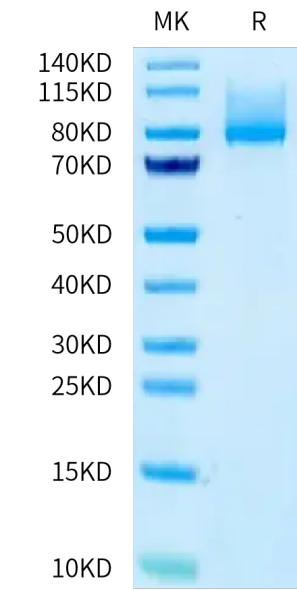
Description	
Source	Recombinant Human CDH6/Cadherin 6 Protein is expressed from HEK293 with His tag at the C-Terminus It contains Ser54-Ala615.
Accession	P55285-1
Molecular Weight	The protein has a predicted MW of 63.62 kDa. Due to glycosylation, the protein migrates to 75-95 kDa based on Bis-Tris PAGE result.
Endotoxin	Less than 1 EU per µg by the LAL method.
Purity	> 95% as determined by Bis-Tris PAGE

Formulation and Storage	
Formulation	Lyophilized from 0.22 µm filtered solution in PBS (pH 7.4). Normally 8% trehalose is added as protectant before lyophilization.
Reconstitution	Dissolve the lyophilized protein in distilled water. Please refer to the Certificate of Analysis for detailed instructions.
Storage	-20 to -80°C for 12 months as supplied from date of receipt.-80°C for 3 months after reconstitution.Recommend to aliquot the protein into smaller quantities for optimal storage. Please minimize freeze-thaw cycles.

Background	
Cadherin 6 (CDH6) is an adhesion molecule localizing to the endometrial luminal epithelial cell surface in the mid-secretory/receptive phase and knockdown of CDH6 in the Ishikawa cells (receptive endometrial epithelial cell line) compromises cell integrity.	

Assay Data

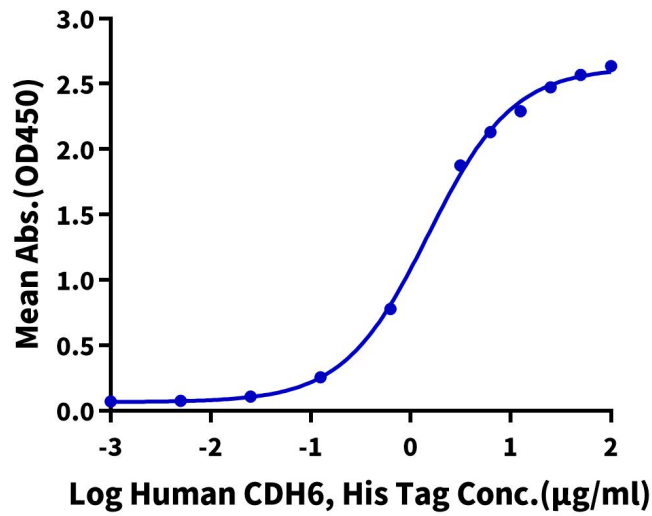
Bis-Tris PAGE



Human CDH6 on Bis-Tris PAGE under reduced condition. The purity is greater than 95%.

ELISA Data

Human CDH6, His Tag ELISA
0.5µg Anti-CDH6 antibody, hFc Tag Per Well



Immobilized Anti-CDH6 Antibody, hFc Tag at 5µg/ml (100µl/well) on the plate. Dose response curve for Human CDH6, His Tag with the EC50 of 1.50µg/ml determined by ELISA (QC Test).