

Human/Cynomolgus/Rhesus macaque CD40 Ligand/TNFSF5 Protein



Cat. No. CDL-HE14L

Description

| | |
|------------------|---|
| Source | Recombinant Human/Cynomolgus/Rhesus macaque CD40 Ligand/TNFSF5 Protein is expressed from E.coli with His tag at the C-terminus. |
| | It contains Gln114-Leu261. |
| Accession | P29965(Human) /G7Q1T4(Cynomolgus) /P63304(Rhesus macaque) |
| Molecular Weight | The protein has a predicted MW of 17.15 kDa same as Bis-Tris PAGE result. |
| Endotoxin | Less than 1 EU per µg by the LAL method. |
| Purity | > 95% as determined by Bis-Tris PAGE |

Formulation and Storage

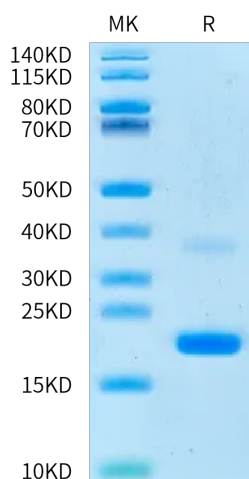
| | |
|-------------|--|
| Formulation | Supplied as 0.22 µm filtered solution in PBS, 10% glycerol (pH 7.4). |
| Storage | Valid for 12 months from date of receipt when stored at -80°C. Recommend to aliquot the protein into smaller quantities for optimal storage. Please minimize freeze-thaw cycles. |

Background

CD40 ligand or CD40L, also called CD154, is a protein that is primarily expressed on activated T cells and is a member of the TNF superfamily of molecules. It binds to CD40 (protein) on antigen-presenting cells (APC), which leads to many effects depending on the target cell type. In total CD40L has three binding partners: CD40, $\alpha 5\beta 1$ integrin and $\alpha 11\beta 3$. CD154 acts as a costimulatory molecule and is particularly important on a subset of T cells called T follicular helper cells.

Assay Data

Bis-Tris PAGE

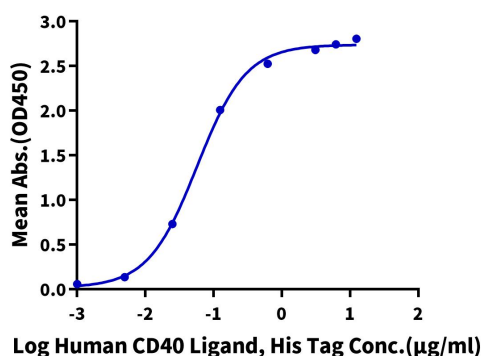


Human/Cynomolgus/Rhesus macaque CD40 Ligand on Bis-Tris PAGE under reduced condition. The purity is greater than 95%.

ELISA Data

Human CD40 Ligand, His Tag ELISA

0.2µg Human CD40, hFc Tag Per Well



Immobilized Human CD40, hFc Tag at 2µg/ml (100µl/well) on the plate. Dose response curve for Human/Cynomolgus/Rhesus macaque CD40 Ligand, His Tag with the EC50 of 57.6ng/ml determined by ELISA (QC Test).