

Biotinylated Human CD27 Ligand/CD70 Trimer Protein (Primary Amine Labeling)



Cat. No. CDL-HM427B

Description	
Source	Recombinant Biotinylated Human CD27 Ligand/CD70 Trimer Protein (Primary Amine Labeling) is expressed from HEK293 with His tag at the N-Terminus. It contains Leu50-Pro193 trimer design.
Accession	P32970-1
Molecular Weight	The protein has a predicted MW of 51.8 kDa. Due to glycosylation, the protein migrates to 55-70 kDa based on Bis-Tris PAGE result.
Endotoxin	Less than 1 EU per µg by the LAL method.
Purity	> 95% as determined by Bis-Tris PAGE > 95% as determined by HPLC

Formulation and Storage	
Formulation	Lyophilized from 0.22µm filtered solution in PBS (pH 7.4). Normally 8% trehalose is added as protectant before lyophilization.
Reconstitution	Dissolve the lyophilized protein in distilled water. Please refer to the Certificate of Analysis for detailed instructions.
Storage	-20 to -80°C for 12 months as supplied from date of receipt. -80°C for 3 months after reconstitution. Recommend to aliquot the protein into smaller quantities for optimal storage. Please minimize freeze-thaw cycles.

Background	
CD70, also named CD27 ligand (CD27L), is a type II transmembrane glycoprotein belonging to the TNF superfamily (TNFSF) and has been designated TNFSF7. CD70 is a cytokine that binds to CD27. Plays a role in T-cell activation. Induces the proliferation of costimulated T-cells and enhances the generation of cytolytic T-cells.	

Assay Data

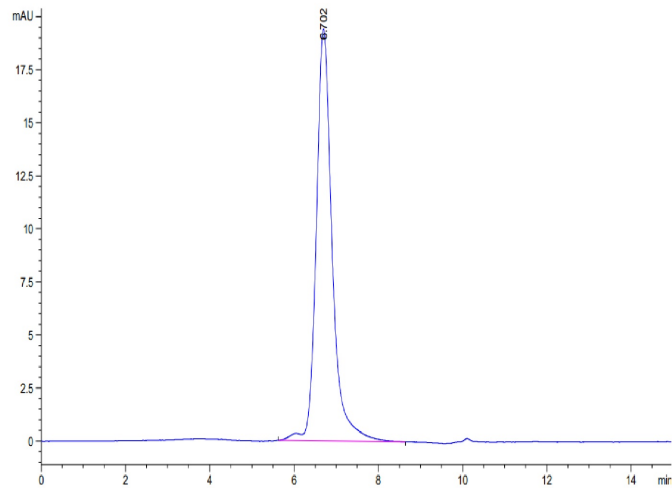
Bis-Tris PAGE



Biotinylated Human CD27 Ligand (Trimer) on Bis-Tris PAGE under reduced condition. The purity is greater than 95%.

SEC-HPLC

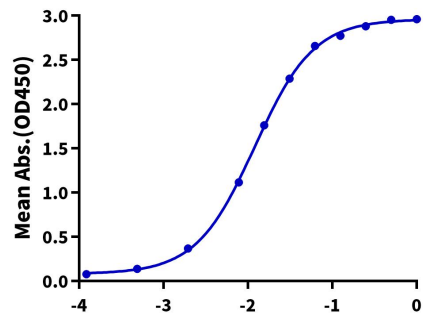
Assay Data



The purity of Biotinylated Human CD27 Ligand (Trimer) is greater than 95% as determined by SEC-HPLC.

ELISA Data

Biotinylated Human CD27 Ligand (Trimer), His Tag ELISA
0.1µg Human CD27, hFc Tag Per Well



Immobilized Human CD27, hFc Tag at 1µg/ml (100µl/Well) on the plate. Dose response curve for Biotinylated Human CD27 Ligand (Trimer), His Tag with the EC50 of 12.1ng/ml determined by ELISA (QC Test).