

Rhesus macaque CTGF/CCN2 Protein



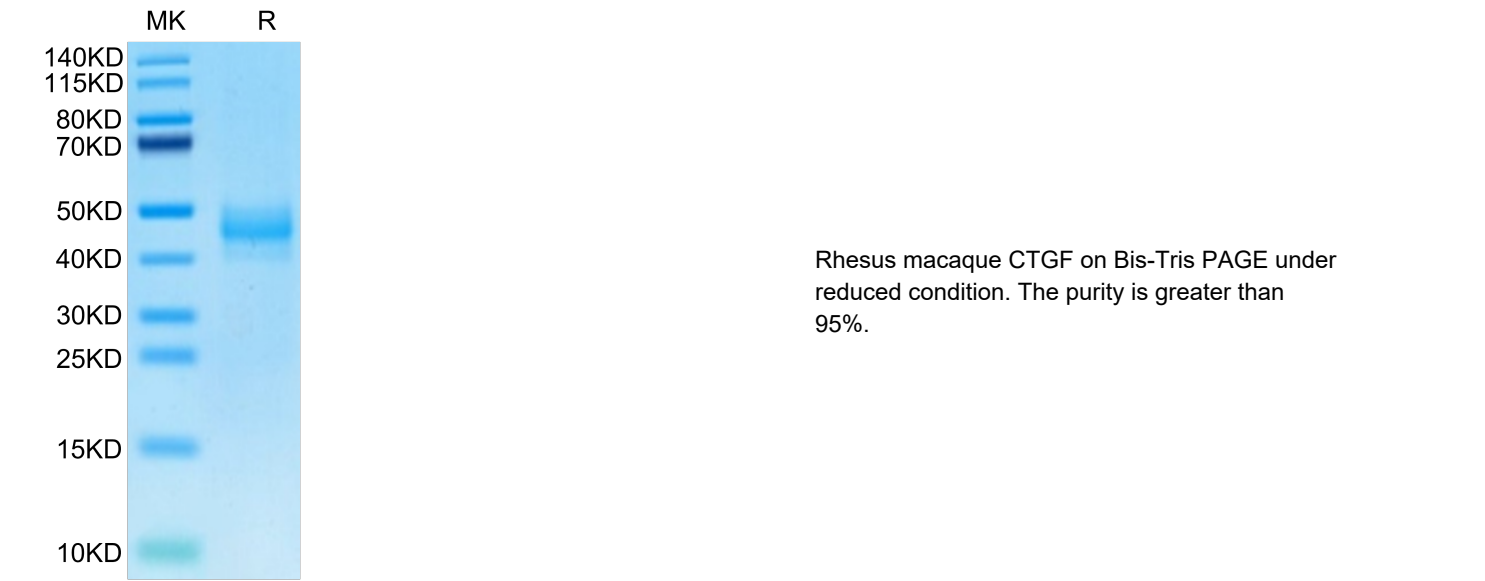
Cat. No. CGF-CM101

Description	
Source	Recombinant Rhesus macaque CTGF/CCN2 Protein is expressed from HEK293 with His tag at the C-Terminus. It contains Gln27-Ala349.
Accession	H9FQD5
Molecular Weight	The protein has a predicted MW of 36.52 kDa. Due to glycosylation, the protein migrates to 40-50 kDa based on Bis-Tris PAGE result.
Endotoxin	Less than 1 EU per µg by the LAL method.
Purity	> 95% as determined by Bis-Tris PAGE

Formulation and Storage	
Formulation	Lyophilized from 0.22µm filtered solution in PBS, 0.2M Arginine (pH 7.4). Normally 8% trehalose is added as protectant before lyophilization.
Reconstitution	Dissolve the lyophilized protein in distilled water. Please refer to the Certificate of Analysis for detailed instructions.
Storage	-20 to -80°C for 12 months as supplied from date of receipt.-80°C for 3 months after reconstitution.Recommend to aliquot the protein into smaller quantities for optimal storage. Please minimize freeze-thaw cycles.

Background	
Connective tissue growth factor (CTGF) is a member of the CCN matricellular protein family, consisting of four domains, that regulates the signaling of other growth factors and promotes kidney fibrosis.CTGF can simultaneously interact with several factors with its four domains. The microenvironment differs depending on the types of cells and tissues and differentiation stages of these cells.	

Assay Data

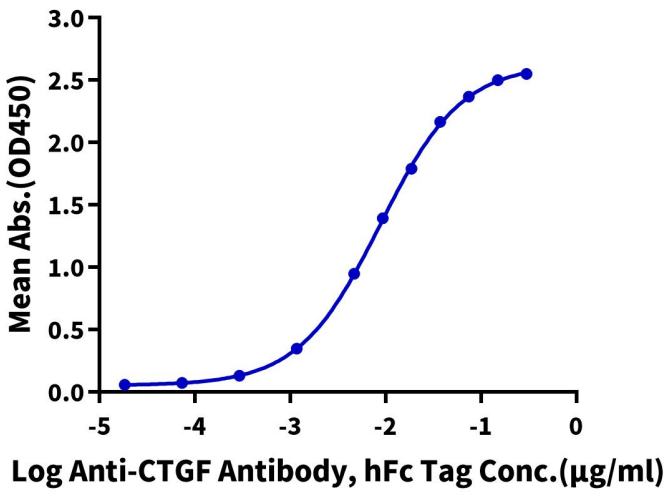


ELISA Data

Assay Data

Rhesus macaque CTGF, His Tag ELISA

0.05µg Rhesus macaque CTGF, His Tag Per Well



Immobilized Rhesus macaque CTGF, His Tag at 0.5µg/ml (100µl/well) on the plate. Dose response curve for Anti-CTGF Antibody, hFc Tag with the EC50 of 8.8ng/ml determined by ELISA (QC Test).