

SARS-COV-2 PLpro/papain-like protease Protein



Cat. No. COV-VE1PL

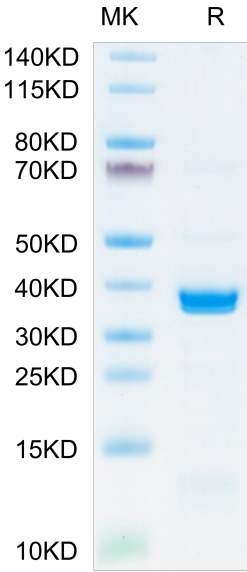
Description	
Source	Recombinant SARS-COV-2 PLpro/papain-like protease Protein is expressed from E.coli with His tag at the N-Terminus. It contains Glu1564-Val1880.
Accession	YP_009725299.1
Molecular Weight	The protein has a predicted MW of 39.2 kDa same as Bis-Tris PAGE result.
Endotoxin	Less than 1 EU per µg by the LAL method.
Purity	> 95% as determined by Bis-Tris PAGE

Formulation and Storage	
Formulation	Supplied as 0.22µm filtered solution in 20mM Tris, 100mM NaCl, 10% Glycerol (pH 8.5).
Storage	Valid for 12 months from date of receipt when stored at -80°C.Recommend to aliquot the protein into smaller quantities for optimal storage. Please minimize freeze-thaw cycles.

Background	
The coronaviral proteases, papain-like protease (PLpro) and 3C-like protease (3CLpro), are attractive antiviral drug targets because they are essential for coronaviral replication. Although the primary function of PLpro and 3CLpro are to process the viral polyprotein in a coordinated manner, PLpro has the additional function of stripping ubiquitin and ISG15 from host-cell proteins to aid coronaviruses in their evasion of the host innate immune responses.	

Assay Data

Bis-Tris PAGE



SARS-COV-2 PLpro on Bis-Tris PAGE under reduced condition. The purity is greater than 95%.