

Cynomolgus C-Reactive Protein /CRP Protein



Cat. No. CRP-CM102

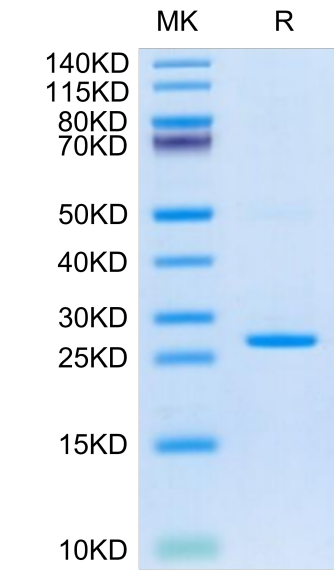
Description	
Source	Recombinant Cynomolgus C-Reactive Protein /CRP Protein is expressed from HEK293 with His tag at the C-Terminus. It contains Gln19-Ser224.
Accession	XP_045255377.1
Molecular Weight	The protein has a predicted MW of 24.33 kDa. Due to glycosylation, the protein migrates to 25-30 kDa based on Bis-Tris PAGE result.
Endotoxin	Less than 1 EU per µg by the LAL method.
Purity	> 95% as determined by Bis-Tris PAGE > 95% as determined by HPLC

Formulation and Storage	
Formulation	Lyophilized from 0.22µm filtered solution in 20mM Tris, 150mM NaCl (pH 8.0). Normally 8% trehalose is added as protectant before lyophilization.
Reconstitution	Dissolve the lyophilized protein in distilled water. Please refer to the Certificate of Analysis for detailed instructions.
Storage	-20 to -80°C for 12 months as supplied from date of receipt.-80°C for 3 months after reconstitution.Recommend to aliquot the protein into smaller quantities for optimal storage. Please minimize freeze-thaw cycles.

Background	
C-reactive protein (CRP) is a polypeptide molecule belonging to the family of pentraxins. CRP is synthesized primarily by the liver in response to certain pro-inflammatory cytokines. It plays an important role in innate immunity, opsonization by its properties, complement activation and immunoglobulins receptor binding. CRP is a protein of the acute systemic inflammation and is, therefore, a prime marker of inflammation.The CRP is quantified by immunonephelometry or immunoturbidimetry.	

Assay Data

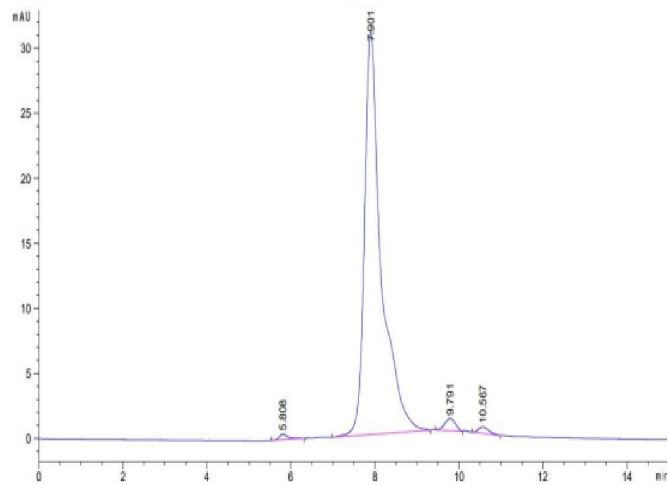
Bis-Tris PAGE



Cynomolgus CRP on Bis-Tris PAGE under reduced condition. The purity is greater than 95%.

SEC-HPLC

Assay Data



The purity of Cynomolgus CRP is greater than 95% as determined by SEC-HPLC.