

# Mouse C-Reactive Protein/CRP Protein

Cat. No. CRP-MM101

## Description

|                  |  |
|------------------|--|
| Source           | Recombinant Mouse C-Reactive Protein/CRP Protein is expressed from HEK293 with His tag at the C-Terminus.<br>It contains His20-Ser225. |
| Accession        | P14847   |
| Molecular Weight | The protein has a predicted MW of 24.2 kDa. Due to glycosylation, the protein migrates to 26-28 kDa based on Bis-Tris PAGE result.     |
| Endotoxin        | Less than 1 EU per µg by the LAL method.   |
| Purity           | > 95% as determined by Bis-Tris PAGE<br>> 90% as determined by HPLC  |

## Formulation and Storage

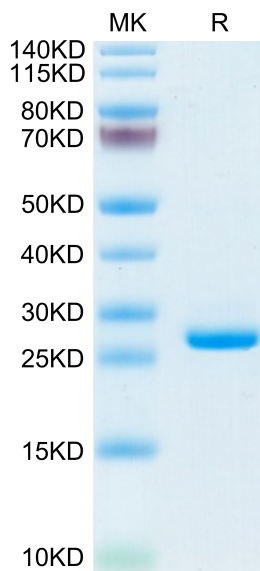
|                |   |
|----------------|---|
| Formulation    | Lyophilized from 0.22µm filtered solution in PBS (pH 7.4). Normally 8% trehalose is added as protectant before lyophilization.  |
| Reconstitution | Dissolve the lyophilized protein in distilled water. Please refer to the Certificate of Analysis for detailed instructions.   |
| Storage        | -20 to -80°C for 12 months as supplied from date of receipt. -80°C for 3 months after reconstitution. Recommend to aliquot the protein into smaller quantities for optimal storage. Please minimize freeze-thaw cycles. |

## Background

C-reactive protein (CRP) is a polypeptide molecule belonging to the family of pentraxins. CRP is synthesized primarily by the liver in response to certain pro-inflammatory cytokines. It plays an important role in innate immunity, opsonization by its properties, complement activation and immunoglobulins receptor binding. CRP is a protein of the acute systemic inflammation and is, therefore, a prime marker of inflammation. The CRP is quantified by immunonephelometry or immunoturbidimetry.

## Assay Data

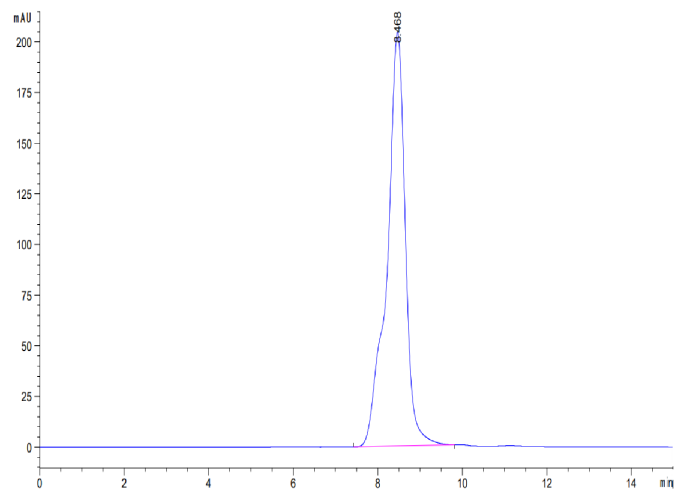
### Bis-Tris PAGE



Mouse CRP on Bis-Tris PAGE under reduced condition. The purity is greater than 95%.

### SEC-HPLC

Assay Data



The purity of Mouse CRP is greater than 90% as determined by SEC-HPLC.