

Cynomolgus DLL3 Protein



Cat. No. DLL-CM103

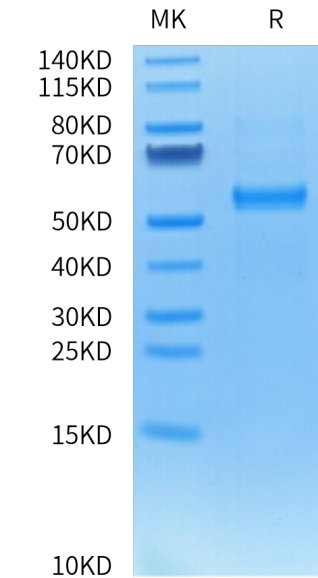
Description	
Source	Recombinant Cynomolgus DLL3 Protein is expressed from HEK293 with His tag at the C-Terminus. It contains Ala27-Ala477.
Accession	A0A2K5WSR1
Molecular Weight	The protein has a predicted MW of 48.80 kDa. Due to glycosylation, the protein migrates to 52-62 kDa based on Bis-Tris PAGE result.
Endotoxin	Less than 1 EU per µg by the LAL method.
Purity	> 95% as determined by Bis-Tris PAGE

Formulation and Storage	
Formulation	Lyophilized from 0.22 µm filtered solution in 20mM Tris, 200mM NaCl, 200mM L-arginine (pH 8.5). Normally 8% trehalose is added as protectant before lyophilization.
Reconstitution	Dissolve the lyophilized protein in distilled water. Please refer to the Certificate of Analysis for detailed instructions.
Storage	-20 to -80°C for 12 months as supplied from date of receipt.-80°C for 3 months after reconstitution.Recommend to aliquot the protein into smaller quantities for optimal storage. Please minimize freeze-thaw cycles.

Background	
Delta-like protein 3 (DLL3) is a transmembrane protein that belongs to the Delta/Serrate/Lag-2 (DSL) family of Notch ligands. DLL3 inhibits primary neurogenesis. May be required to divert neurons along a specific differentiation pathway. Plays a role in the formation of somite boundaries during segmentation of the paraxial mesoderm (By similarity).	

Assay Data

Bis-Tris PAGE



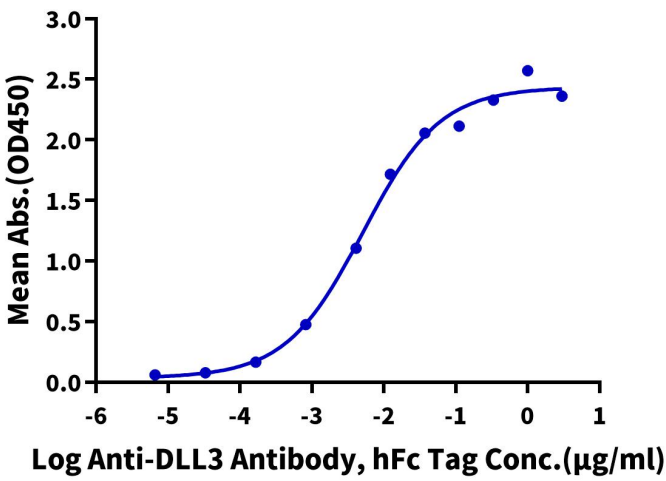
Cynomolgus DLL3 on Bis-Tris PAGE under reduced condition. The purity is greater than 95%.

ELISA Data

Assay Data

Cynomolgus DLL3, His Tag ELISA

0.02µg Cynomolgus DLL3, His Tag Per Well



Immobilized Cynomolgus DLL3, His Tag at 0.2µg/ml (100µl/well) on the plate. Dose response curve for Anti-DLL3 Antibody, hFc Tag with the EC50 of 5.0ng/ml determined by ELISA.