

Human/Cynomolgus/Rhesus macaque Ephrin-A3/EFNA3 Protein



Cat. No. EFN-HM2A3

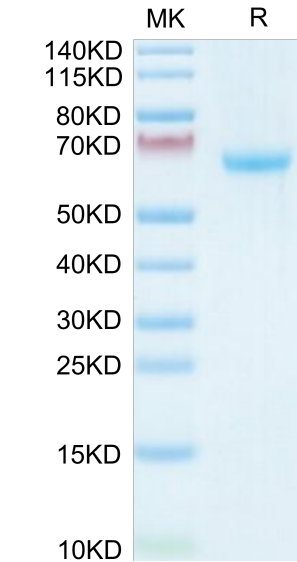
Description	
Source	Recombinant Human/Cynomolgus/Rhesus macaque Ephrin-A3/EFNA3 Protein is expressed from HEK293 with hFc tag at the C-Terminus. It contains Gln23-Ser213.
Accession	P52797-1(Human) / A0A2K5VZR7(Cynomolgus) / NP_001252612.1(Rhesus macaque)
Molecular Weight	The protein has a predicted MW of 41.8 kDa. Due to glycosylation, the protein migrates to 60-70 kDa based on Bis-Tris PAGE result.
Endotoxin	Less than 1 EU per µg by the LAL method.
Purity	> 95% as determined by Bis-Tris PAGE > 95% as determined by HPLC

Formulation and Storage	
Formulation	Lyophilized from 0.22µm filtered solution in PBS (pH 7.4). Normally 8% trehalose is added as protectant before lyophilization.
Reconstitution	Dissolve the lyophilized protein in distilled water. Please refer to the Certificate of Analysis for detailed instructions.
Storage	-20 to -80°C for 12 months as supplied from date of receipt.-80°C for 3 months after reconstitution.Recommend to aliquot the protein into smaller quantities for optimal storage. Please minimize freeze-thaw cycles.

Background	
Interaction of Eph receptor tyrosine kinases with their membrane bound ephrin ligands initiates bidirectional signaling events that regulate cell migratory and adhesive behavior. Whole-mount in situ hybridization revealed overlapping expression of the Epha1 receptor and its high-affinity ligands ephrin A1 (Efna1) and ephrin A3 (Efna3) in the primitive streak and the posterior paraxial mesoderm during early mouse development.	

Assay Data

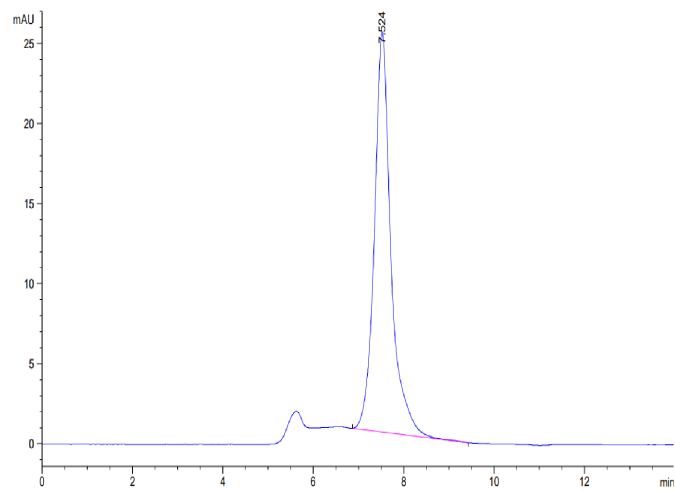
Bis-Tris PAGE



Human/Cynomolgus/Rhesus macaque Ephrin-A3 on Bis-Tris PAGE under reduced condition. The purity is greater than 95%.

SEC-HPLC

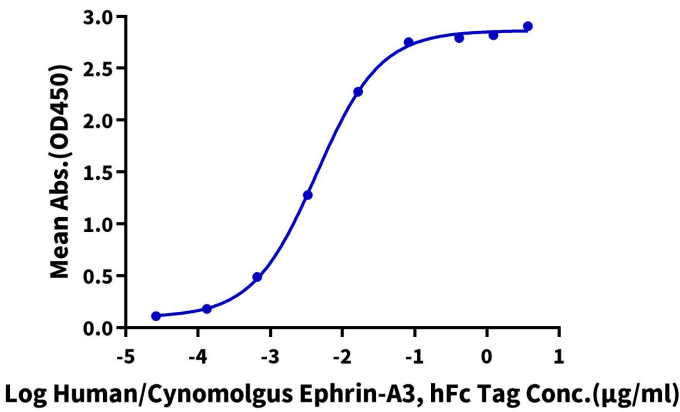
Assay Data



The purity of Human/Cynomolgus/Rhesus macaque Ephrin-A3 is greater than 95% as determined by SEC-HPLC.

ELISA Data

Human/Cynomolgus Ephrin-A3, hFc Tag ELISA
0.5µg Human EPHA10, His Tag Per Well



Immobilized Human EPHA10, His Tag at 5µg/ml (100µl/well) on the plate. Dose response curve for Human/Cynomolgus/Rhesus macaque Ephrin-A3, hFc Tag with the EC50 of 4.4ng/ml determined by ELISA (QC Test).