

## Mouse EGF Protein

Cat. No. EGF-MM202



### Description

<b>Source</b>	Recombinant Mouse EGF Protein is expressed from HEK293 with hFc tag at the N-Terminus. It contains Asn977-Arg1029.
<b>Accession</b>	P01132
<b>Molecular Weight</b>	The protein has a predicted MW of 32.35 kDa. Due to glycosylation, the protein migrates to 35-40 kDa based on Bis-Tris PAGE result.
<b>Endotoxin</b>	Less than 1 EU per µg by the LAL method.
<b>Purity</b>	> 95% as determined by Bis-Tris PAGE > 95% as determined by HPLC

### Formulation and Storage

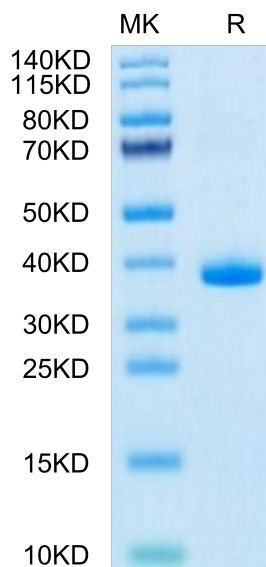
<b>Formulation</b>	Lyophilized from 0.22µm filtered solution in PBS (pH 7.4). Normally 8% trehalose is added as protectant before lyophilization.
<b>Reconstitution</b>	Dissolve the lyophilized protein in distilled water. Please refer to the Certificate of Analysis for detailed instructions.
<b>Storage</b>	-20 to -80°C for 12 months as supplied from date of receipt. -80°C for 3 months after reconstitution. Recommend to aliquot the protein into smaller quantities for optimal storage. Please minimize freeze-thaw cycles.

### Background

The epidermal growth factor (EGF) family of peptides encodes several proteins that can function as growth factors. The EGF-like peptides, with the exception of proteins of the EGF-CFC subfamily, bind and activate tyrosine kinase receptors that belong to the erbB family.

### Assay Data

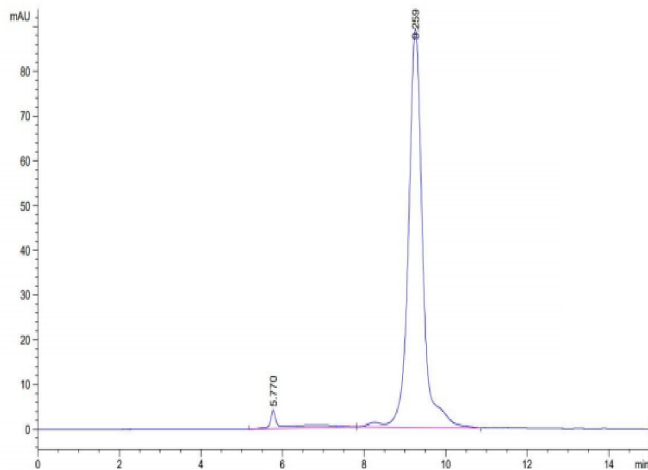
#### Bis-Tris PAGE



Mouse EGF on Bis-Tris PAGE under reduced condition. The purity is greater than 95%.

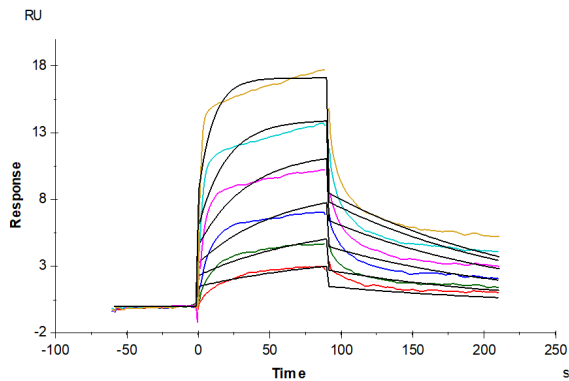
#### SEC-HPLC

Assay Data



The purity of Mouse EGF is greater than 95% as determined by SEC-HPLC.

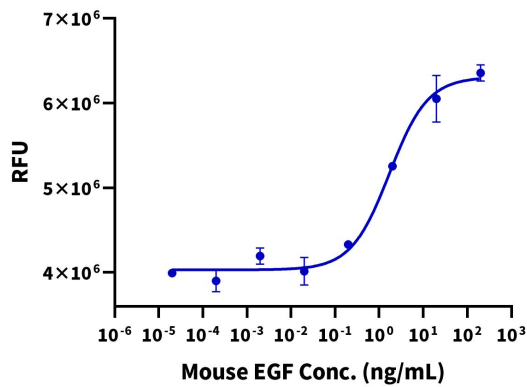
SPR Data



Mouse EGFR, His Tag captured on CM5 Chip via anti-his antibody can bind Mouse EGF, hFc Tag with an affinity constant of 3.98 nM as determined in SPR assay (Biacore T200).

Cell Based Assay

Recombinant Mouse EGF Bioactivity



Measured in a cell proliferation assay using Balb/3T3 mouse embryonic fibroblasts. The ED50 for this effect is typically 0.4 - 3 ng/mL.