

Cynomolgus EPHA5 Protein



Cat. No. EPH-CM1A5

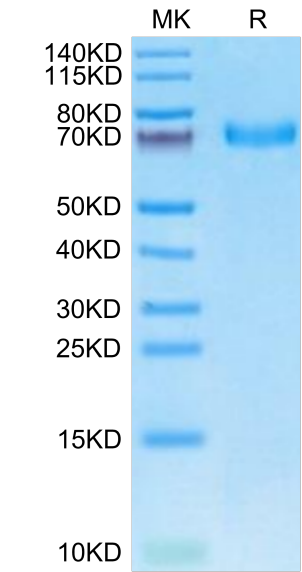
Description	
Source	Recombinant Cynomolgus EPHA5 Protein is expressed from HEK293 with His tag at the C-Terminus. It contains Pro25-Gln572.
Accession	A0A2K5W6J6
Molecular Weight	The protein has a predicted MW of 61.73 kDa. Due to glycosylation, the protein migrates to 70-75kDa based on Bis-Tris PAGE result.
Endotoxin	Less than 1 EU per µg by the LAL method.
Purity	> 95% as determined by Bis-Tris PAGE > 95% as determined by HPLC

Formulation and Storage	
Formulation	Lyophilized from 0.22µm filtered solution in PBS (pH 7.4). Normally 8% trehalose is added as protectant before lyophilization.
Reconstitution	Dissolve the lyophilized protein in distilled water. Please refer to the Certificate of Analysis for detailed instructions.
Storage	-20 to -80°C for 12 months as supplied from date of receipt.-80°C for 3 months after reconstitution.Recommend to aliquot the protein into smaller quantities for optimal storage. Please minimize freeze-thaw cycles.

Background	
Ephrin type-A receptor 5 (EphA5) expression was detected in all non-tumor gastric epithelia but was differentially expressed among gastric cancer samples. EphA5 is differentially expressed in gastric cancer. EphA5 may therefore be a potential therapeutic target and may have clinical utility as a marker for lymph node metastasis in gastric cancer.	

Assay Data

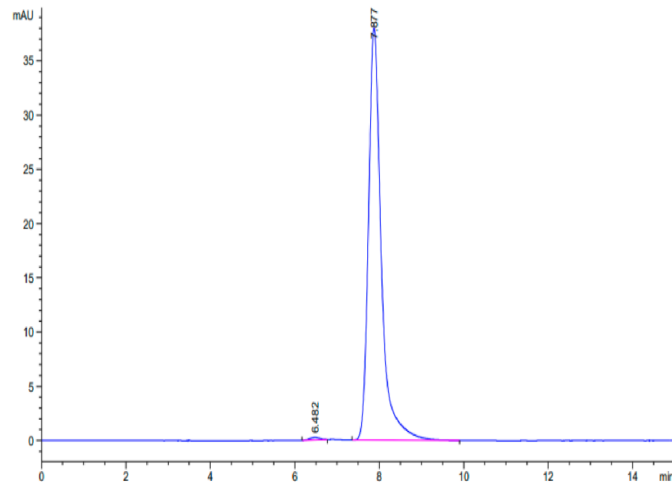
Bis-Tris PAGE



Cynomolgus EPHA5 on Bis-Tris PAGE under reduced condition. The purity is greater than 95%.

SEC-HPLC

Assay Data



The purity of Cynomolgus EPHA5 is greater than 95% as determined by SEC-HPLC.