

Biotinylated Human FGL1 Protein (Primary Amine Labeling)



Cat. No. FGL-HM211B

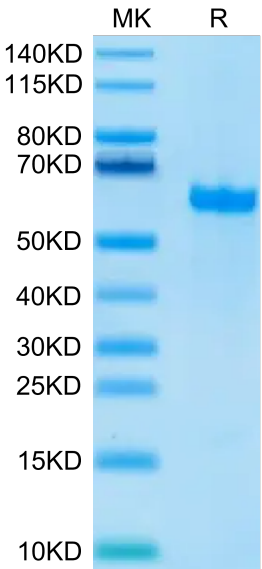
Description	
Source	Recombinant Biotinylated Human FGL1 Protein (Primary Amine Labeling) is expressed from HEK293 with hFc tag at the N-Terminus. It contains Asp64-Asn305.
Accession	Q08830
Molecular Weight	The protein has a predicted MW of 54.8 kDa. Due to glycosylation, the protein migrates to 60-66 kDa based on Bis-Tris PAGE result.
Endotoxin	Less than 1 EU per µg by the LAL method.
Purity	> 95% as determined by Bis-Tris PAGE > 95% as determined by HPLC

Formulation and Storage	
Formulation	Supplied as 0.22µm filtered solution in 20mM PB, 250mM NaCl (pH 7.4).
Storage	Valid for 12 months from date of receipt when stored at -80°C.Recommend to aliquot the protein into smaller quantities for optimal storage. Please minimize freeze-thaw cycles.

Background	
Fibrinogen-like protein 1 (FGL-1) is a protein that is structurally related to fibrinogen. In humans, FLG-1 is encoded by the FGL1 gene.Fibrinogen-like protein 1 is a member of the fibrinogen family of proteins, which also includes fibrinogen, fibrinogen-like protein 2, and clotting factors V, VIII, and XIII.Fibrinogen-like Protein 1 is a major immune inhibitory ligand of LAG-3.	

Assay Data

Bis-Tris PAGE



Biotinylated Human FGL1 on Bis-Tris PAGE under reduced condition. The purity is greater than 95%.

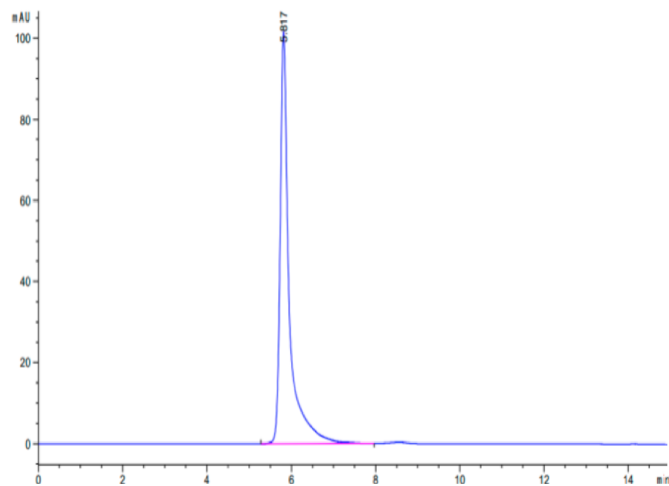
SEC-HPLC

Biotinylated Human FGL1 Protein (Primary Amine Labeling)



Cat. No. FGL-HM211B

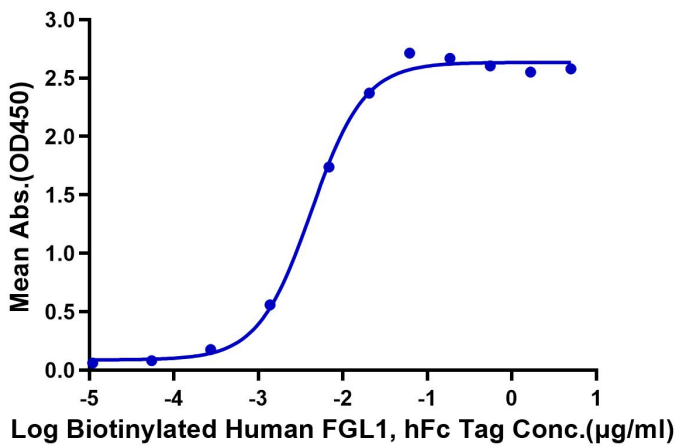
Assay Data



The purity of Biotinylated Human FGL1 is greater than 95% as determined by SEC-HPLC.

ELISA Data

**Biotinylated Human FGL1, hFc Tag ELISA**  
0.1µg Human LAG3, His Tag Per Well



Immobilized Human LAG3, His Tag at 1µg/ml (100µl/well) on the plate. Dose response curve for Biotinylated Human FGL1, hFc Tag with the EC50 of 4.2ng/ml determined by ELISA.