

Canine GUCY2C/Guanylyl cyclase C Protein

Cat. No. GCC-DM101



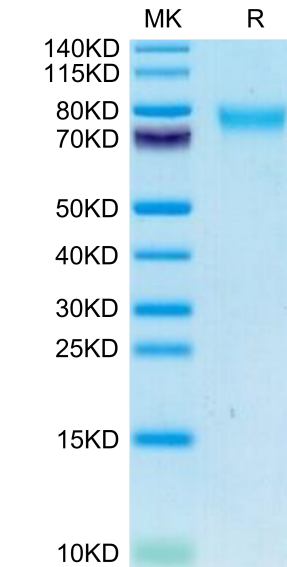
Description	
Source	Recombinant Canine GUCY2C/Guanylyl cyclase C Protein is expressed from HEK293 with His tag at the C-Terminus. It contains Tyr21-Gln430.
Accession	F1PAG3
Molecular Weight	The protein has a predicted MW of 47.6 kDa. Due to glycosylation, the protein migrates to 75-80 kDa based on Bis-Tris PAGE result.
Endotoxin	Less than 1 EU per ug by the LAL method.
Purity	> 95% as determined by Bis-Tris PAGE > 95% as determined by HPLC

Formulation and Storage	
Formulation	Lyophilized from 0.22µm filtered solution in PBS (pH 7.4). Normally 8% trehalose is added as protectant before lyophilization.
Reconstitution	Dissolve the lyophilized protein in distilled water. Please refer to the Certificate of Analysis for detailed instructions.
Storage	-20 to -80°C for 12 months as supplied from date of receipt. -80°C for 3 months after reconstitution. Recommend to aliquot the protein into smaller quantities for optimal storage. Please minimize freeze-thaw cycles.

Background	
Guanylyl cyclase C (GUCY2C) has canonical centrality in defense of key intestinal homeostatic mechanisms, encompassing fluid and electrolyte balance, epithelial dynamics, antitumorigenesis, and intestinal barrier function. GUCY2C may represent a new target for anti-obesity pharmacotherapy.	

Assay Data

Bis-Tris PAGE



Canine GUCY2C/Guanylyl cyclase C on Bis-Tris PAGE under reduced condition. The purity is greater than 95%.

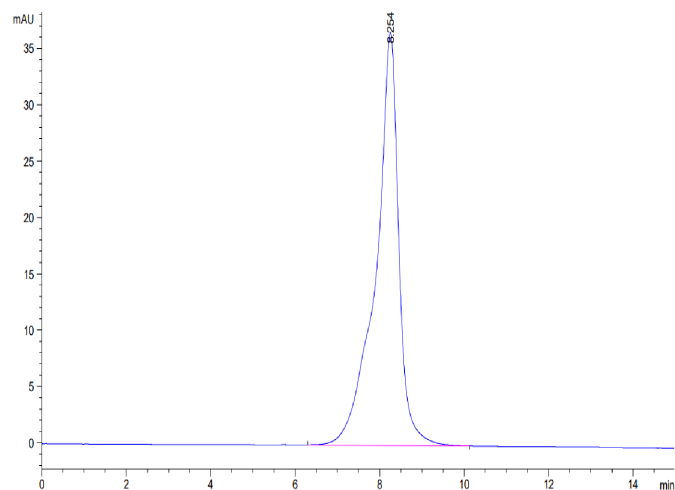
SEC-HPLC

Canine GUCY2C/Guanylyl cyclase C Protein

Cat. No. GCC-DM101



Assay Data



The purity of Canine GUCY2C/Guanylyl cyclase C is greater than 95% as determined by SEC-HPLC.