

Human GUCY2C/Guanylyl cyclase C Protein



Cat. No. GCC-HM201

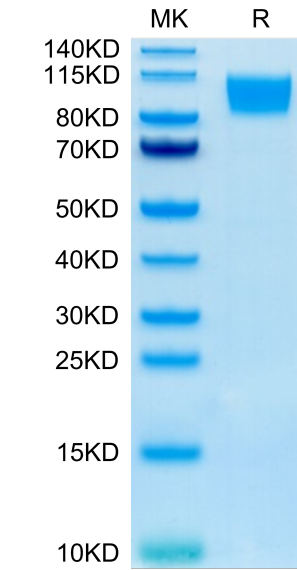
Description	
Source	Recombinant Human GUCY2C/Guanylyl cyclase C Protein is expressed from HEK293 with hFc tag at the C-Terminus. It contains Ser24-Gln430.
Accession	P25092-1
Molecular Weight	The protein has a predicted MW of 72.8 kDa. Due to glycosylation, the protein migrates to 85-115 kDa based on Bis-Tris PAGE result.
Endotoxin	Less than 1 EU per µg by the LAL method.
Purity	> 95% as determined by Bis-Tris PAGE > 95% as determined by HPLC

Formulation and Storage	
Formulation	Lyophilized from 0.22µm filtered solution in PBS (pH 7.4). Normally 8% trehalose is added as protectant before lyophilization.
Reconstitution	Dissolve the lyophilized protein in distilled water. Please refer to the Certificate of Analysis for detailed instructions.
Storage	-20 to -80°C for 12 months as supplied from date of receipt.-80°C for 3 months after reconstitution.Recommend to aliquot the protein into smaller quantities for optimal storage. Please minimize freeze-thaw cycles.

Background	
Guanylyl cyclase C (GUCY2C) has canonical centrality in defense of key intestinal homeostatic mechanisms, encompassing fluid and electrolyte balance, epithelial dynamics, antitumorigenesis, and intestinal barrier function. GUCY2C may represent a new target for anti-obesity pharmacotherapy.	

Assay Data

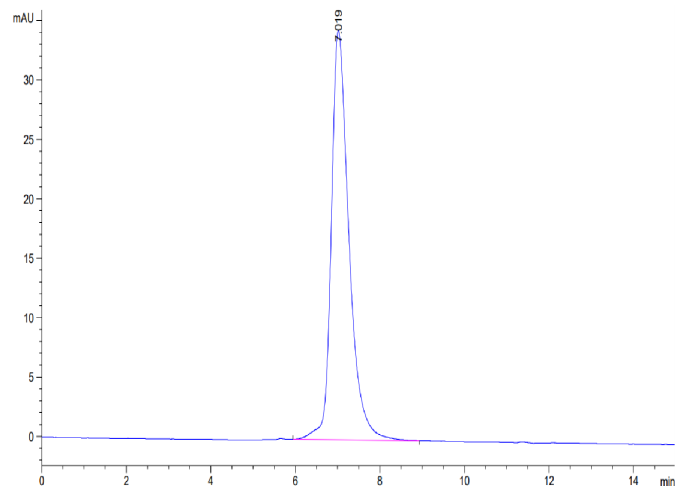
Bis-Tris PAGE



Human GUCY2C on Bis-Tris PAGE under reduced condition. The purity is greater than 95%.

SEC-HPLC

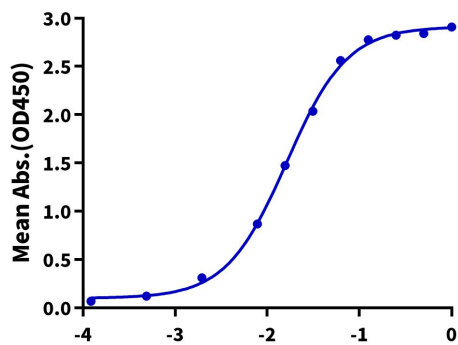
Assay Data



The purity of Human GUCY2C is greater than 95% as determined by SEC-HPLC.

ELISA Data

Human GUCY2C, hFc Tag ELISA
0.5µg Human GUCY2C, hFc Tag Per Well



Immobilized Human GUCY2C, hFc Tag at 5µg/ml (100µl/well) on the plate. Dose response curve for Biotinylated Anti-GUCY2C Antibody, hFc Tag with the EC50 of 16.2ng/ml determined by ELISA (QC Test).