

Rhesus macaque gp130/CD130/IL-6 R beta Protein



Cat. No. GP1-RM130

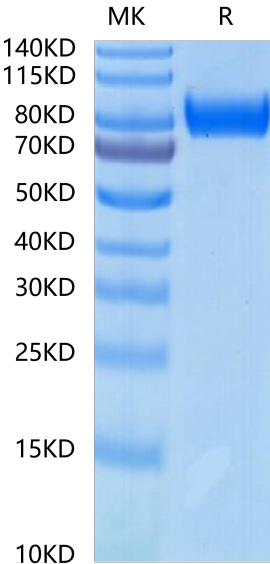
Description	
Source	Recombinant Rhesus macaque gp130/CD130/IL-6 R beta Protein is expressed from HEK293 with His tag at the C-terminus. It contains Glu47-Ala644.
Accession	F7FXB6
Molecular Weight	The protein has a predicted MW of 69.09 kDa. Due to glycosylation, the protein migrates to 75-105 kDa based on Bis-Tris PAGE result.
Endotoxin	Less than 1 EU per µg by the LAL method.
Purity	> 95% as determined by Bis-Tris PAGE > 95% as determined by HPLC

Formulation and Storage	
Formulation	Lyophilized from 0.22 µm filtered solution in PBS (pH 7.4). Normally 8% trehalose is added as protectant before lyophilization.
Reconstitution	Dissolve the lyophilized protein in distilled water. Please refer to the Certificate of Analysis for detailed instructions.
Storage	-20 to -80°C for 12 months as supplied from date of receipt. -80°C for 3 months after reconstitution. Recommend to aliquot the protein into smaller quantities for optimal storage. Please minimize freeze-thaw cycles.

Background	
gp130 is a common signal transducing component of the functional receptor complexes for the interleukin (IL)-6 family of cytokines, ie, IL-6, IL-11, leukemia inhibitory factor (LIF), oncostatin M, ciliary neurotrophic factor, and cardiotrophin-1. These cytokines exhibit pleiotropic biological activities in, for instance, immune, hematopoietic, and neural systems, and function in a redundant manner owing to the shared usage of gp130.	

Assay Data

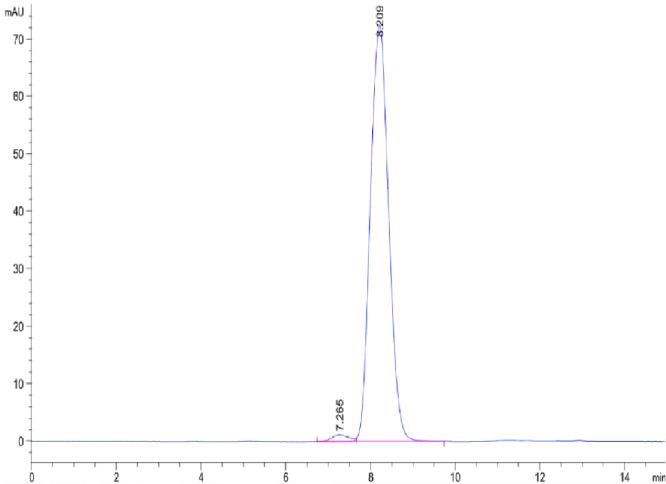
Bis-Tris PAGE



Rhesus macaque gp130 on Bis-Tris PAGE under reduced condition. The purity is greater than 95%.

SEC-HPLC

Assay Data



The purity of Rhesus macaque gp130 is greater than 95% as determined by SEC-HPLC.