

Human GPA34/VSIG1 Protein

Cat. No. GPA-HM134



Description

Source	Recombinant Human GPA34/VSIG1 Protein is expressed from HEK293 with His tag at the C-Terminus.
	It contains Val22-Glu232.
Accession	Q86XK7-1
Molecular Weight	The protein has a predicted MW of 24 kDa. Due to glycosylation, the protein migrates to 48-55 kDa based on Bis-Tris PAGE result.
Endotoxin	Less than 1 EU per µg by the LAL method.
Purity	> 95% as determined by Bis-Tris PAGE
	> 95% as determined by HPLC

Formulation and Storage

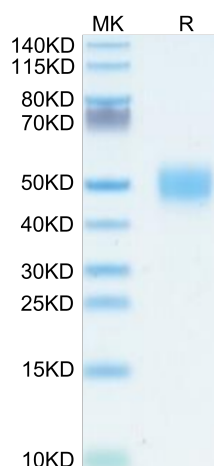
Formulation	Lyophilized from 0.22µm filtered solution in PBS (pH 7.4). Normally 8% trehalose is added as protectant before lyophilization.
Reconstitution	Dissolve the lyophilized protein in distilled water. Please refer to the Certificate of Analysis for detailed instructions.
Storage	-20 to -80°C for 12 months as supplied from date of receipt. -80°C for 3 months after reconstitution. Recommend to aliquot the protein into smaller quantities for optimal storage. Please minimize freeze-thaw cycles.

Background

VSIG1, a cell adhesion protein of the immunoglobulin superfamily, is preferentially expressed in stomach, testis, and certain gastric, esophageal and ovarian cancers. Here, we describe the expression patterns of three alternatively spliced isoforms of mouse Vsig1 during pre- and postnatal development of stomach and potential function of Vsig1 in differentiation of gastric epithelia. VSIG1 is required for the establishment of glandular versus squamous epithelia in the stomach.

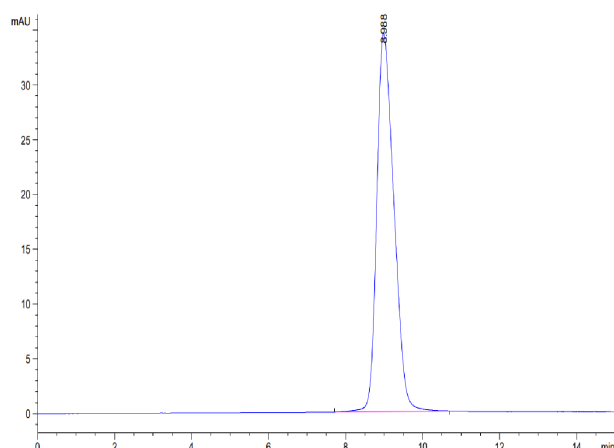
Assay Data

Bis-Tris PAGE



Human GPA34 on Bis-Tris PAGE under reduced condition. The purity is greater than 95%.

SEC-HPLC



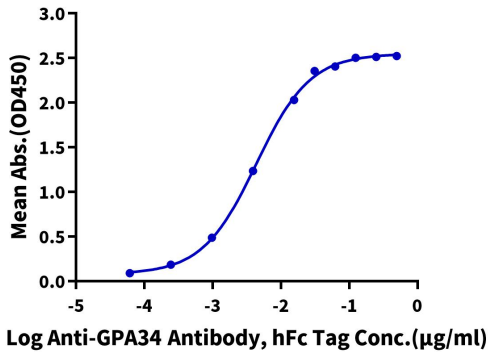
The purity of Human GPA34 is greater than 95% as determined by SEC-HPLC.

Assay Data

ELISA Data

Human GPA34, His Tag ELISA

0.05µg Human GPA34, His Tag Per Well



Immobilized Human GPA34, His Tag at 0.5µg/ml (100µl/well) on the plate. Dose response curve for Anti-GPA34 Antibody, hFc Tag with the EC50 of 4.4ng/ml determined by ELISA.