

Canine GRP-10 proform Protein

Cat. No. GRP-DM20P



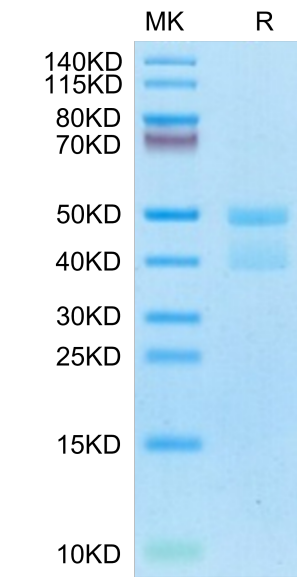
Description	
Source	Recombinant Canine GRP-10 proform Protein is expressed from HEK293 with hFc tag at the C-Terminus. It contains Ala24-Gly147.
Accession	E2QW58
Molecular Weight	The protein has a predicted MW of 40.49 kDa. Due to glycosylation, the protein migrates to 41-50 kDa based on Bis-Tris PAGE result.
Endotoxin	Less than 1 EU per µg by the LAL method.
Purity	> 95% as determined by Bis-Tris PAGE > 95% as determined by HPLC

Formulation and Storage	
Formulation	Lyophilized from 0.22µm filtered solution in PBS (pH 7.4). Normally 8% trehalose is added as protectant before lyophilization.
Reconstitution	Dissolve the lyophilized protein in distilled water. Please refer to the Certificate of Analysis for detailed instructions.
Storage	-20 to -80°C for 12 months as supplied from date of receipt.-80°C for 3 months after reconstitution.Recommend to aliquot the protein into smaller quantities for optimal storage. Please minimize freeze-thaw cycles.

Background	
Gastrin-releasing peptide (GRP) is a neuropeptide with growth-stimulatory and tumorigenic properties, and neuropeptides have previously been suggested to play a role in the complex cascade of chemical activity associated with periodontal inflammation.	

Assay Data

Bis-Tris PAGE



Canine GRP-10 proform on Bis-Tris PAGE under reduced condition. The purity is greater than 95%.

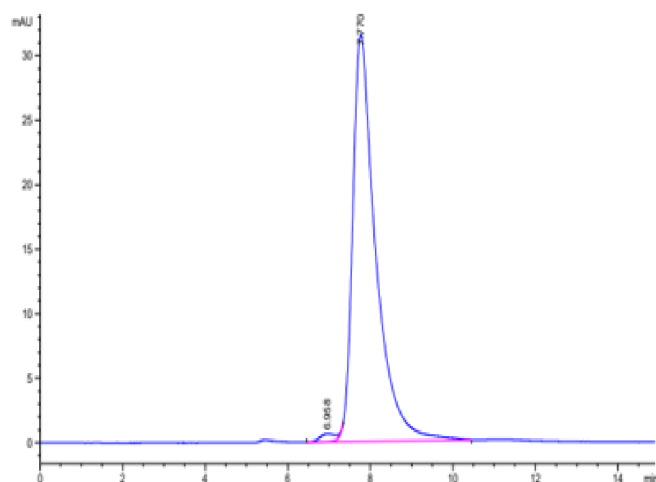
SEC-HPLC

## Canine GRP-10 proform Protein

Cat. No. GRP-DM20P



### Assay Data



The purity of Canine GRP-10 proform is greater than 95% as determined by SEC-HPLC.