

Biotinylated Human HLA-G&B2M&Peptide (RIIPRHLQL) Monomer Protein



Cat. No. HLG-HM41CB

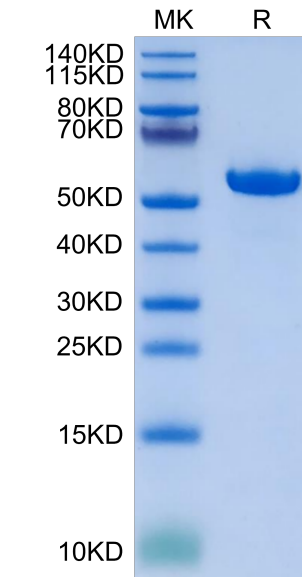
Description	
Source	Recombinant Biotinylated Human HLA-G&B2M&Peptide (RIIPRHLQL) Monomer Protein is expressed from HEK293 with His tag and Avi tag at the C-Terminus. It contains Gly25-Thr305(HLA-G), Ile21-Met119(B2M) and RIIPRHLQL peptide.
Accession	P17693-1(HLA-G)&P61769(B2M)&RIIPRHLQL
Molecular Weight	The protein has a predicted MW of 50.5 kDa. Due to glycosylation, the protein migrates to 51-60 kDa based on Bis-Tris PAGE result.
Endotoxin	Less than 1 EU per µg by the LAL method.
Purity	> 95% as determined by Bis-Tris PAGE > 95% as determined by HPLC

Formulation and Storage	
Formulation	Lyophilized from 0.22µm filtered solution in PBS (pH 7.4.). Normally 8% trehalose is added as protectant before lyophilization.
Reconstitution	Dissolve the lyophilized protein in distilled water. Please refer to the Certificate of Analysis for detailed instructions.
Storage	-20 to -80°C for 12 months as supplied from date of receipt.-80°C for 3 months after reconstitution.Recommend to aliquot the protein into smaller quantities for optimal storage. Please minimize freeze-thaw cycles.

Background	
HLA-G is a molecule that was first known to confer protection to the fetus from destruction by the immune system of its mother, thus critically contributing to fetal-maternal tolerance. The first functional finding constituted the basis for HLA-G research and can be summarized as such: HLA-G, membrane-bound or soluble, strongly binds its inhibitory receptors on immune cells (NK, T, B, monocytes/dendritic cells), inhibits the functions of these effectors, and so induces immune inhibition.	

Assay Data

Bis-Tris PAGE



Biotinylated Human HLA-G&B2M&Peptide (RIIPRHLQL) Monomer on Bis-Tris PAGE under reduced condition. The purity is greater than 95%.

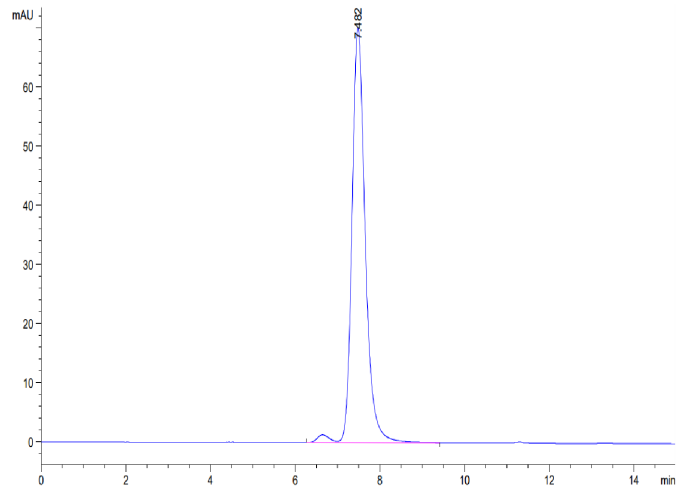
SEC-HPLC

Biotinylated Human HLA-G&B2M&Peptide (RIIPRHLQL) Monomer Protein



Cat. No. HLG-HM41CB

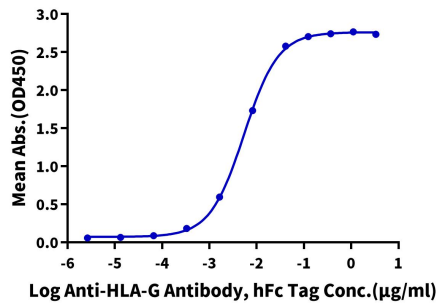
Assay Data



The purity of Biotinylated Human HLA-G&B2M&Peptide (RIIPRHLQL) Monomer is greater than 95% as determined by SEC-HPLC.

ELISA Data

**Biotinylated Human HLA-G&B2M&Peptide (RIIPRHLQL) Monomer, His Tag ELISA**  
0.1µg Biotinylated Human HLA-G&B2M&Peptide (RIIPRHLQL) Monomer, His Tag Per Well



Immobilized Biotinylated Human HLA-G&B2M&Peptide (RIIPRHLQL) Monomer, His-Avi Tag at 1µg/ml (100µl/well) on the streptavidin precoated plate (5µg/ml). Dose response curve for Anti-HLA-G Antibody, hFc Tag with the EC50 of 5.4ng/ml determined by ELISA.