

Human HTRA1 Protein

Cat. No. HTR-HE1A1



Description

Source	Recombinant Human HTRA1 Protein is expressed from E.coli with His tag at the C-Terminus.
	It contains Gln23-Pro480.
Accession	Q92743
Molecular Weight	The protein has a predicted MW of 50.14 kDa. The protein migrates to 38-40 kDa based on Bis-Tris PAGE result.
Endotoxin	Less than 1 EU per µg by the LAL method.
Purity	> 95% as determined by Bis-Tris PAGE

Formulation and Storage

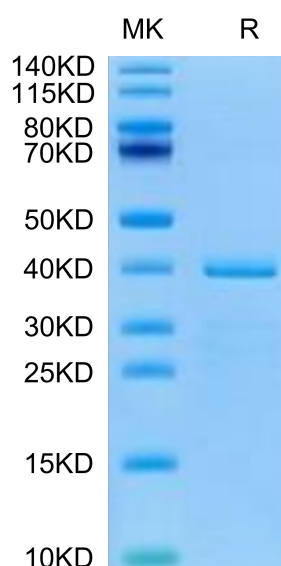
Formulation	Supplied as 0.22µm filtered solution in 50mM Tris, 500mM NaCl (pH 8.5).
Storage	Valid for 12 months from date of receipt when stored at -80°C. Recommend to aliquot the protein into smaller quantities for optimal storage. Please minimize freeze-thaw cycles.

Background

HtrA1 (High temperature requirement A1) family proteins include four members, widely conserved from prokaryotes to eukaryotes, named HtrA1, HtrA2, HtrA3 and HtrA4. HtrA1 is a serine protease involved in a variety of biological functions regulating many signaling pathways degrading specific components and playing key roles in many human diseases such as neurodegenerative disorders, pregnancy complications and cancer.

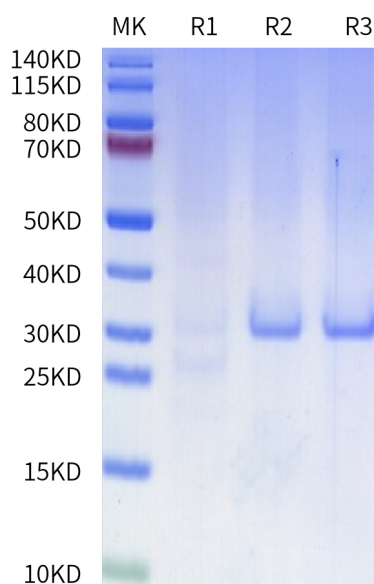
Assay Data

Bis-Tris PAGE



Human HTRA1 on Bis-Tris PAGE under reduced condition. The purity is greater than 95%.

Bioactivity Data



Measured by its ability to cleave beta-casein.
R1: Incubate Human HTRA1 and beta-casein at 37 °C for 20 minutes.
R2: Incubate beta-casein at 37 °C for 20 minutes.
R3: Keep the beta-casein frozen at -20 °C for 20 minutes.