

Mouse IL-15RA/IL-15 R alpha/CD215 Protein



Cat. No. IL5-MM2RA

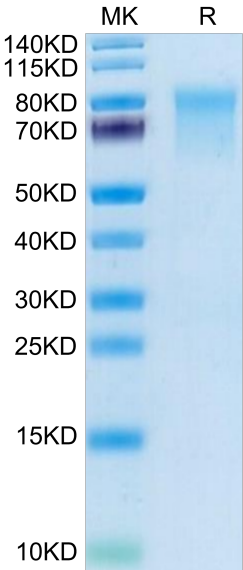
Description	
Source	Recombinant Mouse IL-15RA/IL-15 R alpha/CD215 Protein is expressed from HEK293 with hFc tag at the C-Terminus. It contains Gly33-Lys205.
Accession	Q60819-1
Molecular Weight	The protein has a predicted MW of 45.1 kDa. Due to glycosylation, the protein migrates to 75-82 kDa based on Bis-Tris PAGE result.
Endotoxin	Less than 1 EU per µg by the LAL method.
Purity	> 95% as determined by Bis-Tris PAGE > 95% as determined by HPLC

Formulation and Storage	
Formulation	Lyophilized from 0.22µm filtered solution in PBS (pH 7.4). Normally 8% trehalose is added as protectant before lyophilization.
Reconstitution	Dissolve the lyophilized protein in distilled water. Please refer to the Certificate of Analysis for detailed instructions.
Storage	-20 to -80°C for 12 months as supplied from date of receipt.-80°C for 3 months after reconstitution.Recommend to aliquot the protein into smaller quantities for optimal storage. Please minimize freeze-thaw cycles.

Background	
Interleukin-15 receptor alpha (IL-15R alpha) is a high affinity IL-15 binding protein that is crucial for mediating IL-15 functions such as memory CD8 T cell proliferation and NK, NK/T cell, and intestinal intraepithelial lymphocyte development.	

Assay Data

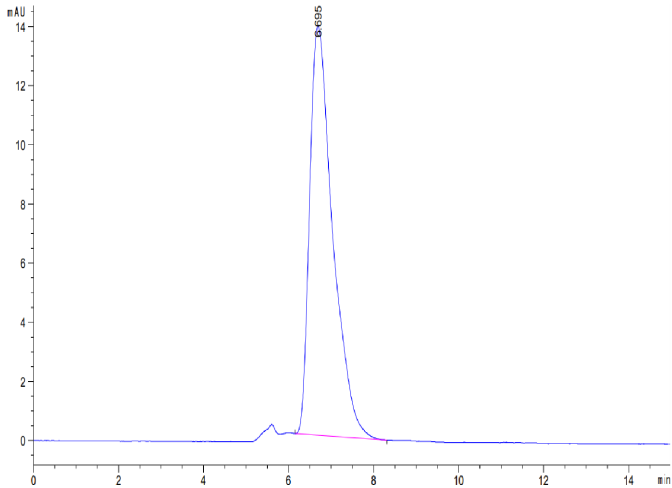
Bis-Tris PAGE



Mouse IL-15RA on Bis-Tris PAGE under reduced condition. The purity is greater than 95%.

SEC-HPLC

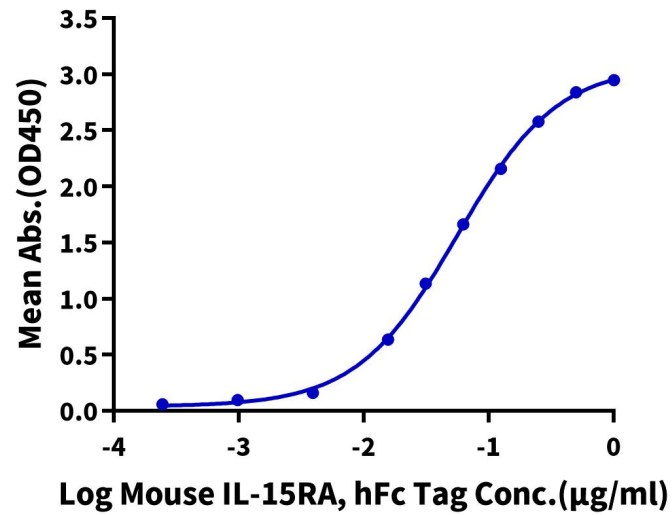
Assay Data



The purity of Mouse IL-15RA is greater than 95% as determined by SEC-HPLC.

ELISA Data

Mouse IL-15RA, hFc Tag ELISA
0.5µg Human IL-15, No Tag Per Well



Immobilized Human IL-15, No Tag at 5µg/ml (100µl/well) on the plate. Dose response curve for Mouse IL-15RA, hFc Tag with the EC50 of 55.6ng/ml determined by ELISA.