

Human Integrin alpha 5 beta 1 (ITGA5&ITGB1) Heterodimer Protein



Cat. No. ITG-HM451

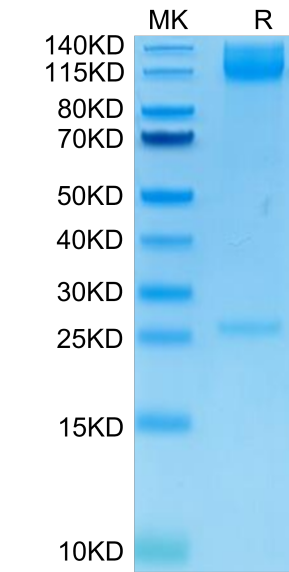
| Description      |  |
|------------------|--|
| Source           | Recombinant Human Integrin alpha 5 beta 1 (ITGA5&ITGB1) Heterodimer Protein is expressed from HEK293 with His tag and Avi tag at the C-Terminus of ITGA5.<br>It contains Phe42-Tyr995(ITGA5) acidic tail and Gln21-Asp728(ITGB1) basic tail. |
| Accession        | P08648(ITGA5)&P05556-1(ITGB1)  |
| Molecular Weight | The protein has a predicted MW of 111.8 kDa (ITGA5) & 83.2 kDa (ITGB1). Due to glycosylation, the protein migrates to 100-140 kDa based on Bis-Tris PAGE result.   |
| Endotoxin        | Less than 1 EU per µg by the LAL method.   |
| Purity           | > 95% as determined by Bis-Tris PAGE<br>> 95% as determined by HPLC  |

| Formulation and Storage |   |
|-------------------------|---|
| Formulation             | Lyophilized from 0.22µm filtered solution in PBS (pH 7.4). Normally 8% trehalose is added as protectant before lyophilization.  |
| Reconstitution          | Dissolve the lyophilized protein in distilled water. Please refer to the Certificate of Analysis for detailed instructions.   |
| Storage                 | -20 to -80°C for 24 months as supplied from date of receipt.-80°C for 3 months after reconstitution.Recommend to aliquot the protein into smaller quantities for optimal storage. Please minimize freeze-thaw cycles. |

| Background  |  |
|---|--|
| Integrin alpha 5/ beta 1, also known as VLA-5, is a widely expressed non-covalent heterodimer of a 160 kDa alpha 5 and a 130 kDa beta 1 Integrin subunit.Alpha 5/ beta 1 is upregulated on tumor vasculature and promotes angiogenesis. |  |

Assay Data

Bis-Tris PAGE



Human ITGA5&ITGB1 on Bis-Tris PAGE under reduced condition. The purity is greater than 95%.

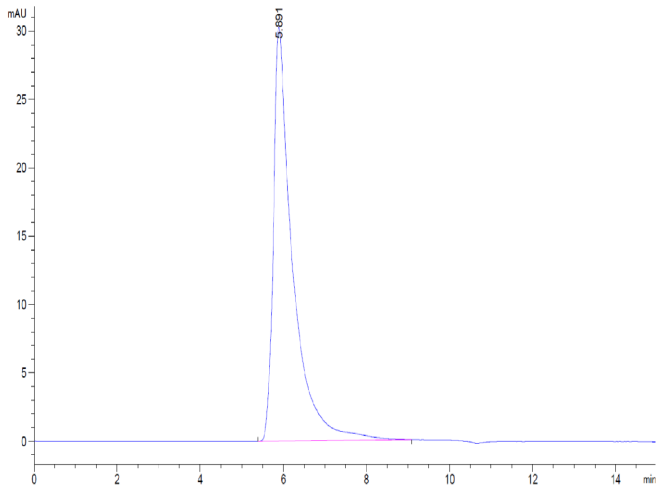
SEC-HPLC

Human Integrin alpha 5 beta 1 (ITGA5&ITGB1) Heterodimer Protein



Cat. No. ITG-HM451

Assay Data

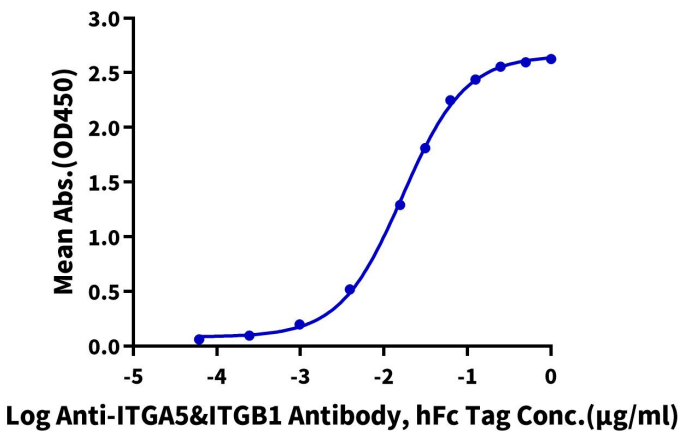


The purity of Human ITGA5&ITGB1 is greater than 95% as determined by SEC-HPLC.

ELISA Data

Human ITGA5&ITGB1, His Tag ELISA

0.1µg Human ITGA5&ITGB1, His Tag Per Well



Immobilized Human ITGA5&ITGB1, His Tag at 1µg/ml (100µl/well) on the plate. Dose response curve for Anti-ITGA5&ITGB1 Antibody, hFc Tag with the EC50 of 16.6ng/ml determined by ELISA (QC Test).