

# Human Kallikrein 3/KLK3 Protein

Cat. No. KLK-HM103



## Description

|                         |   |
|-------------------------|---|
| <b>Source</b>           | Recombinant Human Kallikrein 3/KLK3 Protein is expressed from HEK293 with His tag at the C-Terminus.<br>It contains Ala18-Pro261.   |
| <b>Accession</b>        | P07288-1  |
| <b>Molecular Weight</b> | The protein has a predicted MW of 27.93 kDa. Due to glycosylation, the protein migrates to 32-38 kDa based on Bis-Tris PAGE result. |
| <b>Endotoxin</b>        | Less than 1 EU per µg by the LAL method.  |
| <b>Purity</b>           | > 95% as determined by Bis-Tris PAGE<br>> 95% as determined by HPLC   |

## Formulation and Storage

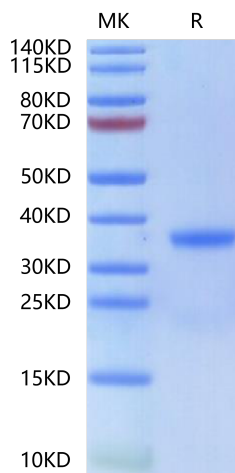
|                       |   |
|-----------------------|---|
| <b>Formulation</b>    | Lyophilized from 0.22 µm filtered solution in PBS (pH 7.4). Normally 8% trehalose is added as protectant before lyophilization.   |
| <b>Reconstitution</b> | Dissolve the lyophilized protein in distilled water. Please refer to the Certificate of Analysis for detailed instructions.   |
| <b>Storage</b>        | -20 to -80°C for 12 months as supplied from date of receipt. -80°C for 3 months after reconstitution. Recommend to aliquot the protein into smaller quantities for optimal storage. Please minimize freeze-thaw cycles. |

## Background

Kallikrein-related peptidase 3 (KLK3), also known as prostate-specific antigen (PSA), is the most useful biomarker for prostate cancer (PCa). KLK3 is suggested to play a role in regulating cancer growth through anti-angiogenic activity in vivo and in vitro.

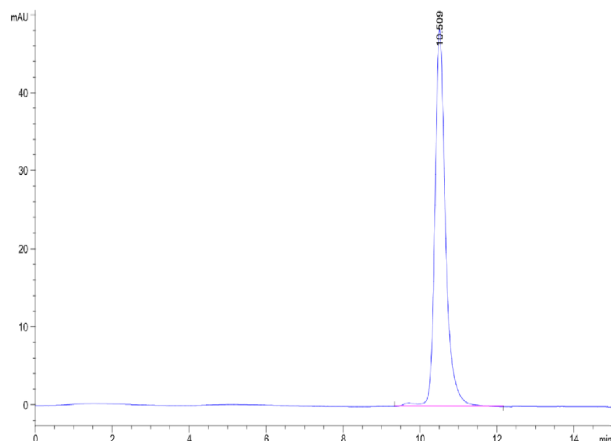
## Assay Data

### Bis-Tris PAGE



Human Kallikrein 3 on Bis-Tris PAGE under reduced condition. The purity is greater than 95%.

### SEC-HPLC



The purity of Human Kallikrein 3 is greater than 95% as determined by SEC-HPLC.

## Human Kallikrein 3/KLK3 Protein

Cat. No. KLK-HM103



### Assay Data

#### Bioactivity Data

Measured by its ability to cleave the colorimetric peptide substrate, Succinyl-Arg-Pro-Tyr-p-Nitroanilide (Suc-RPY-pNA). The specific activity is >150 pmol/min/μg.