

Human KLRG1 Protein



Cat. No. KLR-HM2G1

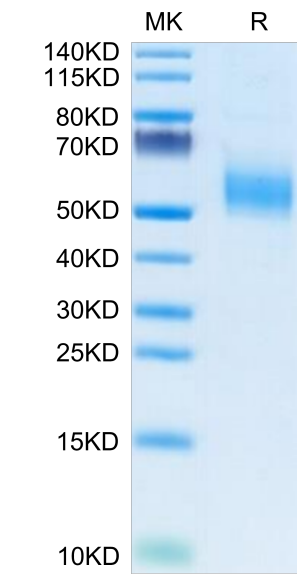
Description	
Source	Recombinant Human KLRG1 Protein is expressed from HEK293 with hFc tag at the N-Terminus. It contains Leu60-Phe195.
Accession	Q96E93-1
Molecular Weight	The protein has a predicted MW of 42.8 kDa. Due to glycosylation, the protein migrates to 50-65 kDa based on Bis-Tris PAGE result.
Endotoxin	Less than 1 EU per µg by the LAL method.
Purity	> 95% as determined by Bis-Tris PAGE > 95% as determined by HPLC

Formulation and Storage	
Formulation	Lyophilized from 0.22µm filtered solution in PBS (pH 7.4). Normally 8% trehalose is added as protectant before lyophilization.
Reconstitution	Dissolve the lyophilized protein in distilled water. Please refer to the Certificate of Analysis for detailed instructions.
Storage	-20 to -80°C for 24 months as supplied from date of receipt. -80°C for 3 months after reconstitution. Recommend to aliquot the protein into smaller quantities for optimal storage. Please minimize freeze-thaw cycles.

Background	
	Immune homeostasis requires the tight, tissue-specific control of the different CD4 Foxp3 regulatory T (Treg) cell populations. The cadherin-binding inhibitory receptor killer cell lectin-like receptor G1 (KLRG1) is expressed by a subpopulation of Treg cells with GATA3 effector phenotype. Lack of KLRG1 on Treg cells conferred on them a competitive advantage in the gut, but not in lymphoid organs. Hence, although absence of KLRG1 is not enough to increase intestinal Treg cells in KLRG1 knockout mice, KLRG1 ligation reduces T-cell receptor signals and the competitive fitness of individual Treg cells in the intestine.

Assay Data

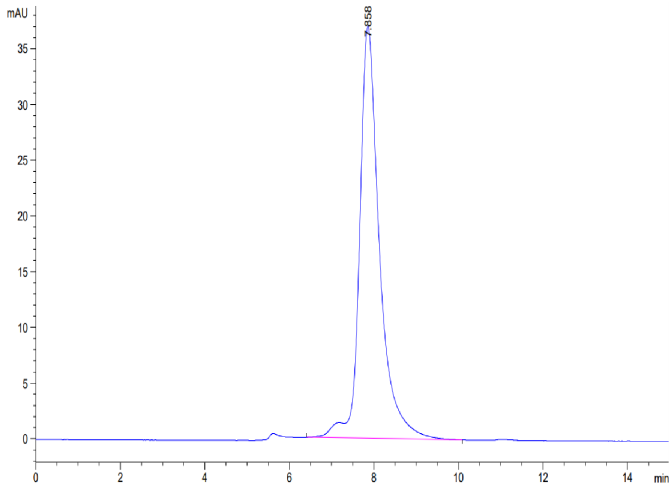
Bis-Tris PAGE



Human KLRG1 on Bis-Tris PAGE under reduced condition. The purity is greater than 95%.

SEC-HPLC

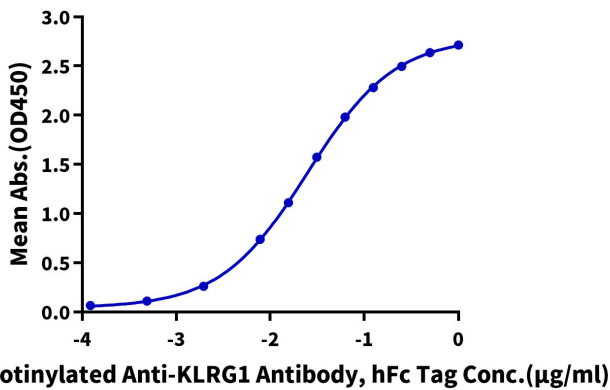
Assay Data



The purity of Human KLRG1 is greater than 95% as determined by SEC-HPLC.

ELISA Data

**Human KLRG1, hFc Tag ELISA**  
0.1µg Human KLRG1, hFc Tag Per Well



Immobilized Human KLRG1, hFc Tag at 1µg/ml (100µl/Well) on the plate. Dose response curve for Biotinylated Anti-KLRG1 Antibody, hFc Tag with the EC50 of 24.9ng/ml determined by ELISA.