

Human LAP (TGF beta 1) Protein



Cat. No. LAP-HM4B1

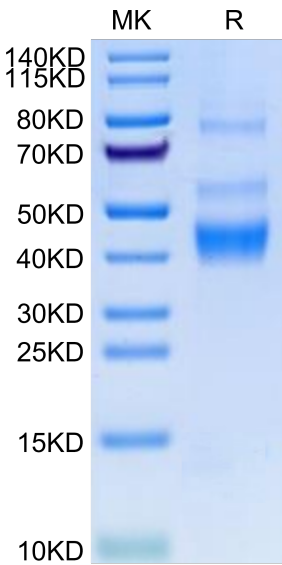
Description	
Source	Recombinant Human LAP (TGF beta 1) Protein is expressed from HEK293 with His tag at the N-Terminus. It contains Leu30-Arg278(C33S).
Accession	P01137
Molecular Weight	The protein has a predicted MW of 31.4 kDa. Due to glycosylation, the protein migrates to 38-48 kDa based on Bis-Tris PAGE result.
Endotoxin	Less than 1 EU per µg by the LAL method.
Purity	> 95% as determined by Bis-Tris PAGE

Formulation and Storage	
Formulation	Lyophilized from 0.22 µm filtered solution in PBS (pH 7.4). Normally 8% trehalose is added as protectant before lyophilization.
Reconstitution	Dissolve the lyophilized protein in distilled water. Please refer to the Certificate of Analysis for detailed instructions.
Storage	-20 to -80°C for 12 months as supplied from date of receipt.-80°C for 3 months after reconstitution.Recommend to aliquot the protein into smaller quantities for optimal storage. Please minimize freeze-thaw cycles.

Background	
Latent TGF beta 1 cDNA encodes a 390 amino acid precursor that contains a 29 aa signal peptide and a 361 aa proprotein. A furinlike convertase processes the proprotein to generate an Nterminal 249 aa latencyassociated peptide (LAP) and a Cterminal 112 aa mature TGF beta 1. Disulfidelinked homodimers of LAP and TGF beta 1 remain noncovalently associated after secretion, forming the small latent TGF beta 1 complex.	

Assay Data

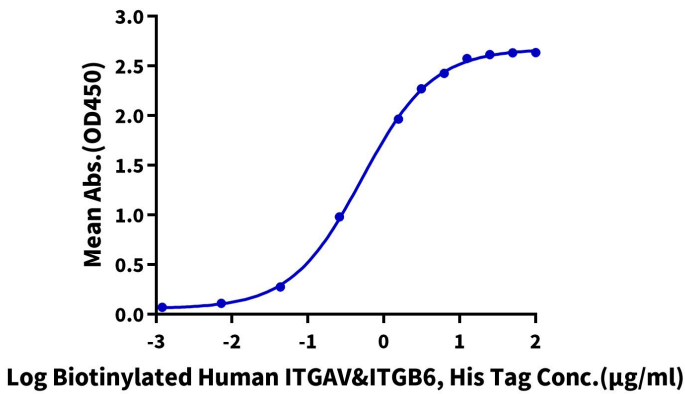
Bis-Tris PAGE



Human LAP (TGF beta 1) on Bis-Tris PAGE under reduced condition. The purity is greater than 95%.

ELISA Data

Human LAP (TGF beta 1), His Tag ELISA
0.5µg Human LAP (TGF beta 1), His Tag Per Well



Immobilized Human LAP (TGF beta 1), His Tag at 5 µg/ml (100 µl/well) on the plate. Dose response curve for Biotinylated Human ITGAV&ITGB6, His Tag with the EC50 of 0.52 µg/ml determined by ELISA.