

Human LIF Protein

Cat. No. LIF-HM201



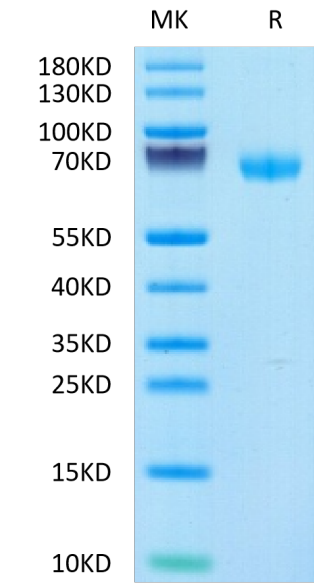
Description	
Source	Recombinant Human LIF Protein is expressed from HEK293 with hFc tag at the C-Terminus. It contains Ser23-Phe202.
Accession	P15018-1
Molecular Weight	The protein has a predicted MW of 46.5 kDa. Due to glycosylation, the protein migrates to 60-70 kDa based on Bis-Tris PAGE result.
Endotoxin	Less than 0.1 EU per µg by the LAL method.
Purity	> 95% as determined by Bis-Tris PAGE > 95% as determined by HPLC

Formulation and Storage	
Formulation	Lyophilized from 0.22µm filtered solution in PBS (pH 7.4). Normally 8% trehalose is added as protectant before lyophilization.
Reconstitution	Dissolve the lyophilized protein in distilled water. Please refer to the Certificate of Analysis for detailed instructions.
Storage	-20 to -80°C for 12 months as supplied from date of receipt.-80°C for 3 months after reconstitution.Recommend to aliquot the protein into smaller quantities for optimal storage. Please minimize freeze-thaw cycles.

Background	
Leukemia inhibitory factor (LIF) has played a vital role in a series of reproductive events, including follicle growth, embryo growth and differentiation. However, it is unclear whether the level of LIF in embryo culture medium can be used as a marker for clinical pregnancy.	

Assay Data

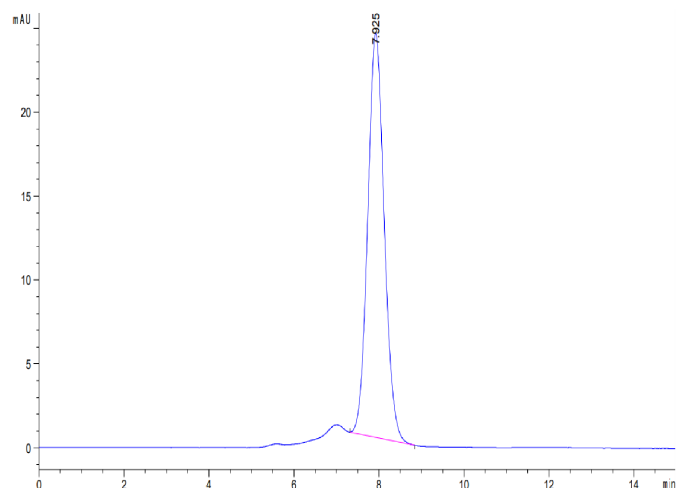
Bis-Tris PAGE



Human LIF on Bis-Tris PAGE under reduced condition. The purity is greater than 95%.

SEC-HPLC

Assay Data



The purity of Human LIF is greater than 95% as determined by SEC-HPLC.