

Human LIF R/CD118 Protein



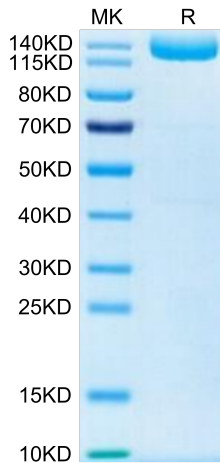
Cat. No. LIF-HM20R

| Description | |
|-------------------------|--|
| Source | Recombinant Human LIF R/CD118 Protein is expressed from HEK293 with hFc tag at the C-Terminus. It contains Gln45-Ser833. |
| Accession | P42702-1 |
| Molecular Weight | The protein has a predicted MW of 116.1 kDa. Due to glycosylation, the protein migrates to 120-160 kDa based on Bis-Tris PAGE result. |
| Endotoxin | Less than 1 EU per µg by the LAL method. |
| Purity | > 90% as determined by Bis-Tris PAGE |
| Formulation and Storage | |
| Formulation | Supplied as 0.22µm filtered solution in 20mM Tris, 500mM NaCL, 200mM L-arginine, 5mM DTT. |
| Storage | Valid for 12 months from date of receipt when stored at -80°C. Recommend to aliquot the protein into smaller quantities for optimal storage. Please minimize freeze-thaw cycles. |

| Background | |
|--|--|
| The leukemia inhibitory factor receptor (LIF-R) subunit is a component of cell-surface receptor complexes for the multifunctional cytokines, LIF, cardiotrophin-1, ciliary neurotrophic factor, and human oncostatin M. The structure of the human LIF-R gene is similar to that of the mouse gene. The transmembrane receptor is encoded by 19 exons. | |

Assay Data

Bis-Tris PAGE

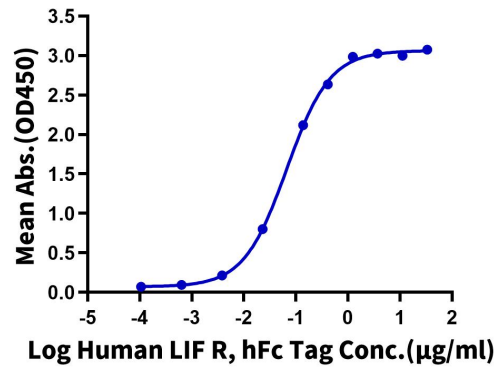


Human LIF R on Bis-Tris PAGE under reduced condition. The purity is greater than 90%.

ELISA Data

Human LIF R, hFc Tag ELISA

0.1µg Human LIF, No Tag Per Well



Immobilized Human LIF, No Tag at 1µg/ml (100µl/Well) on the plate. Dose response curve for Human LIF R, hFc Tag with the EC50 of 66.8ng/ml determined by ELISA.