

Human Siglec-4a/MAG Protein



Cat. No. MAG-HM101

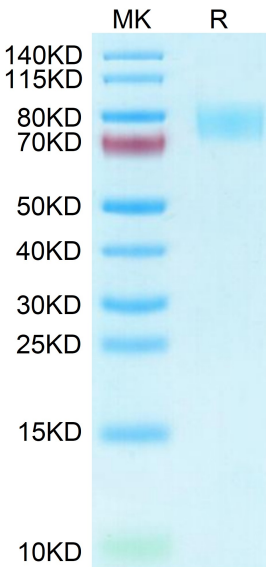
Description	
Source	Recombinant Human Siglec-4a/MAG Protein is expressed from HEK293 with His tag at the C-Terminus. It contains Gly20-Pro516.
Accession	P20916
Molecular Weight	The protein has a predicted MW of 55.8 kDa. Due to glycosylation, the protein migrates to 75-82 kDa based on Bis-Tris PAGE result.
Endotoxin	Less than 1 EU per µg by the LAL method.
Purity	> 95% as determined by Bis-Tris PAGE > 95% as determined by HPLC

Formulation and Storage	
Formulation	Lyophilized from 0.22µm filtered solution in PBS, 100mM L-arginine (pH 7.4). Normally 8% trehalose is added as protectant before lyophilization.
Reconstitution	Dissolve the lyophilized protein in distilled water. Please refer to the Certificate of Analysis for detailed instructions.
Storage	-20 to -80°C for 24 months as supplied from date of receipt. -80°C for 3 months after reconstitution. Recommend to aliquot the protein into smaller quantities for optimal storage. Please minimize freeze-thaw cycles.

Background	
Siglec-4a, also known as Myelin-Associated Glycoprotein (MAG), is a type I transmembrane glycoprotein belonging to the Siglec family, a subgroup of the Ig superfamily. Adhesion molecule that mediates interactions between myelinating cells and neurons by binding to neuronal sialic acid-containing gangliosides and to the glycoproteins RTN4R and RTN4RL2.	

Assay Data

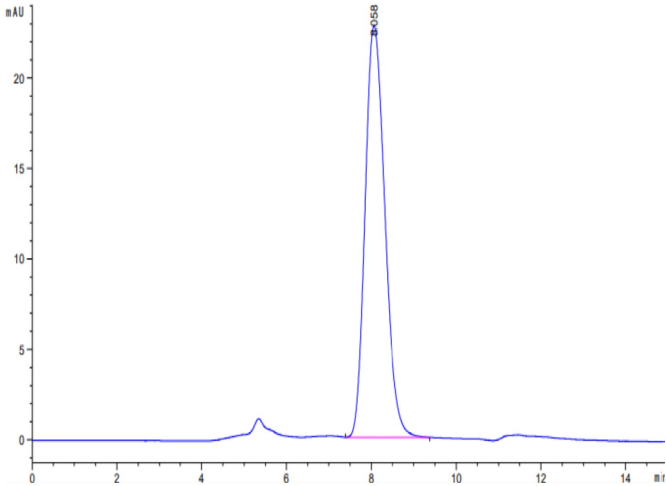
Bis-Tris PAGE



Human Siglec-4a on Bis-Tris PAGE under reduced condition. The purity is greater than 95%.

SEC-HPLC

Assay Data

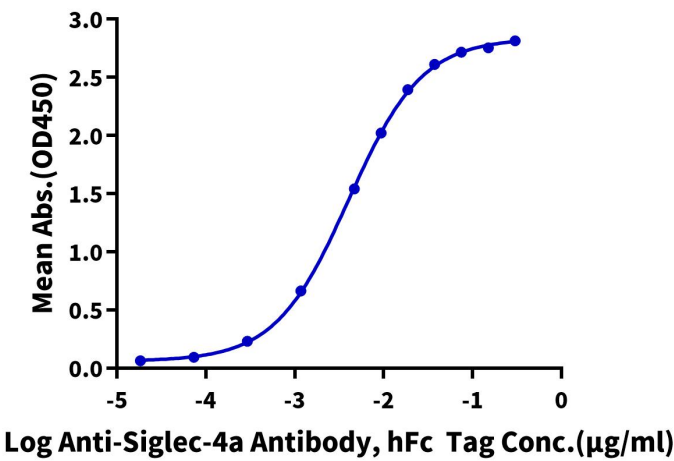


The purity of Human Siglec-4a is greater than 95% as determined by SEC-HPLC.

ELISA Data

Human Siglec-4a, His Tag ELISA

0.1 µg Human Siglec-4a, His Tag Per Well



Immobilized Human Siglec-4a, His Tag at 1 µg/ml (100 µl/well) on the plate. Dose response curve for Anti-Siglec-4a Antibody, hFc Tag with the EC50 of 4.0 ng/ml determined by ELISA.